

Greenhorn Gulch

Counter Locations:

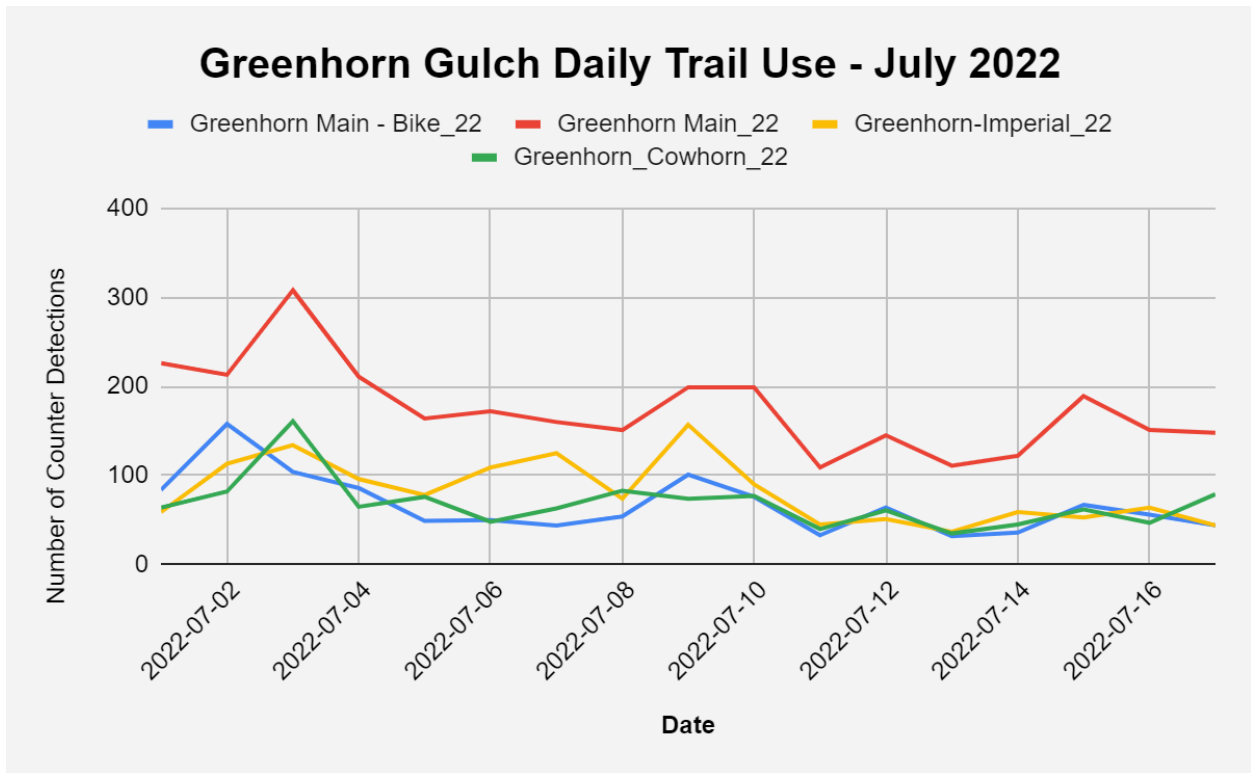
- Greenhorn Tr. #156
- Cowhorn Trail (no trail number)
- Cow Creek Connector Tr. #153
- Imperial Tr. #315



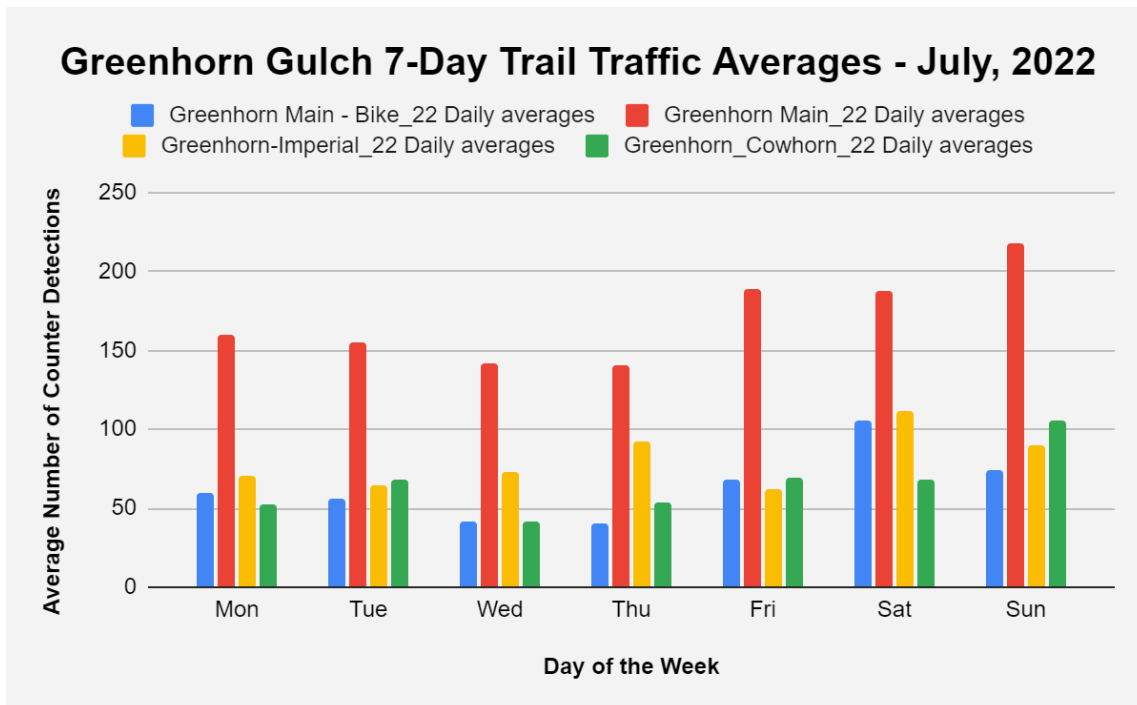
Purple markers indicate counters.

Counters present from July 1st-17th, 2022 (18 Days Total).

Daily Counts

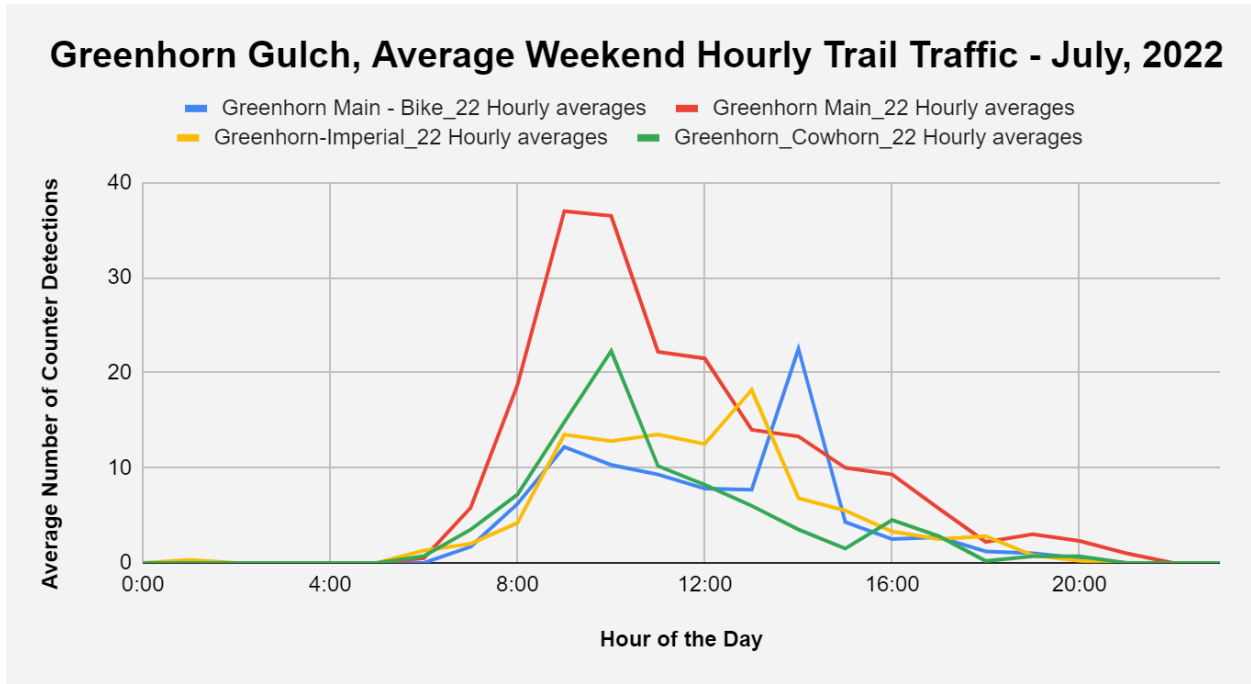


7-Day Average

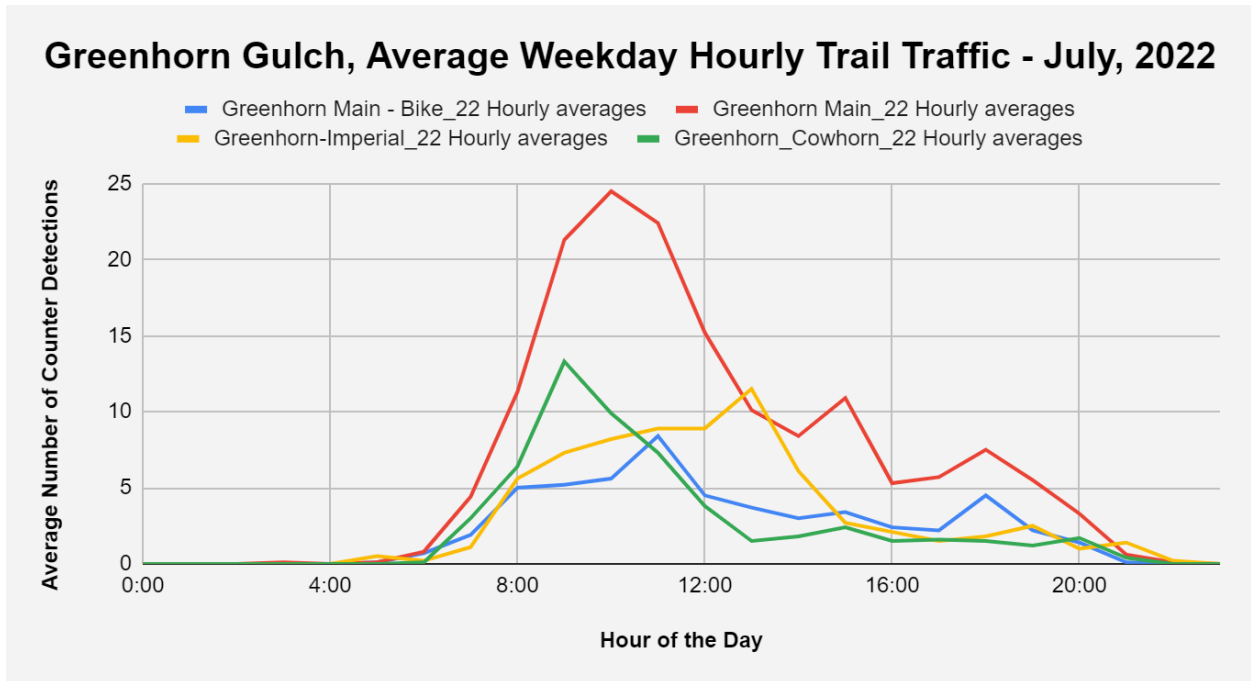


Hourly Average

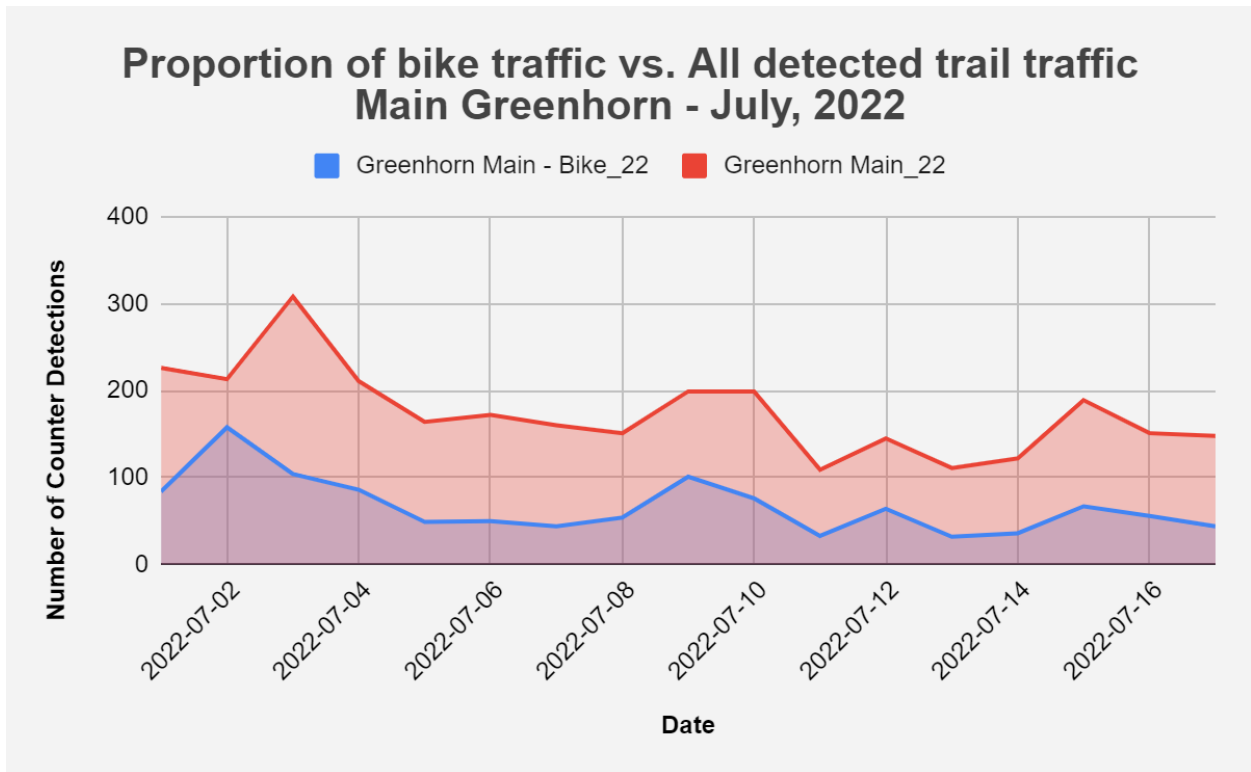
Weekend



Weekday

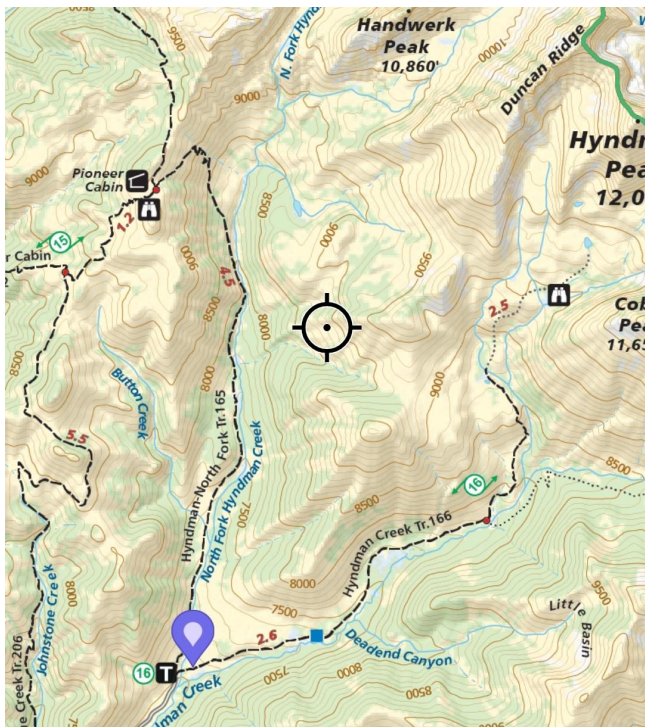


Detected bike traffic vs. All detected trail traffic



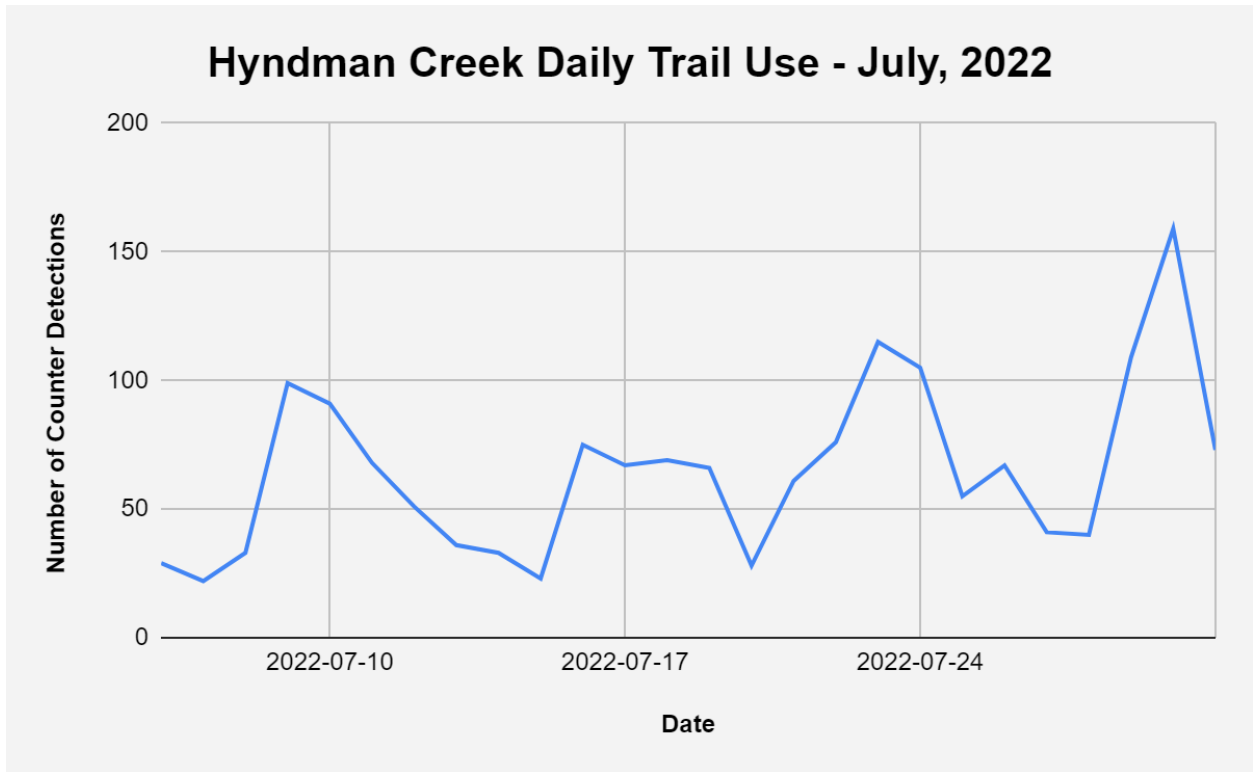
Average percentage of detected bike traffic: **37.18%** (June=43.17%)

Hyndman Creek Trail

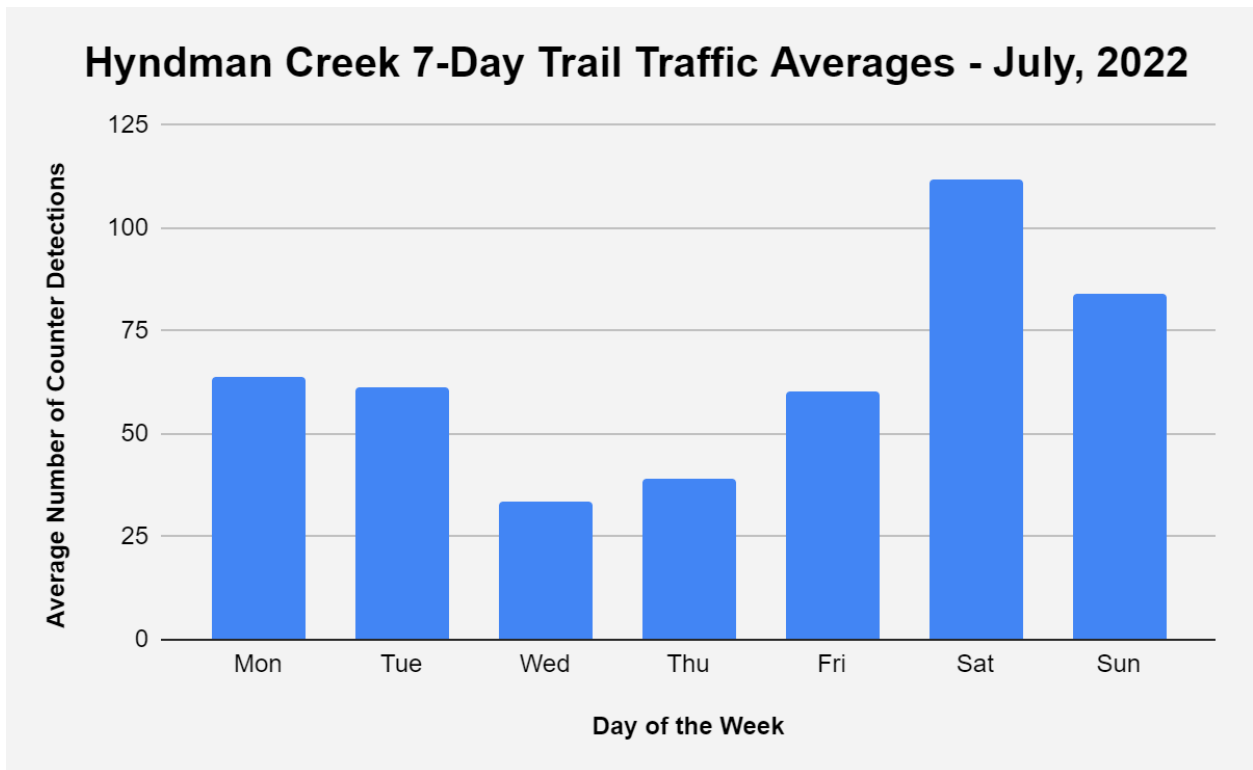


Counters present from July 6th-31st, 2022 (26 Days Total).

Daily Counts

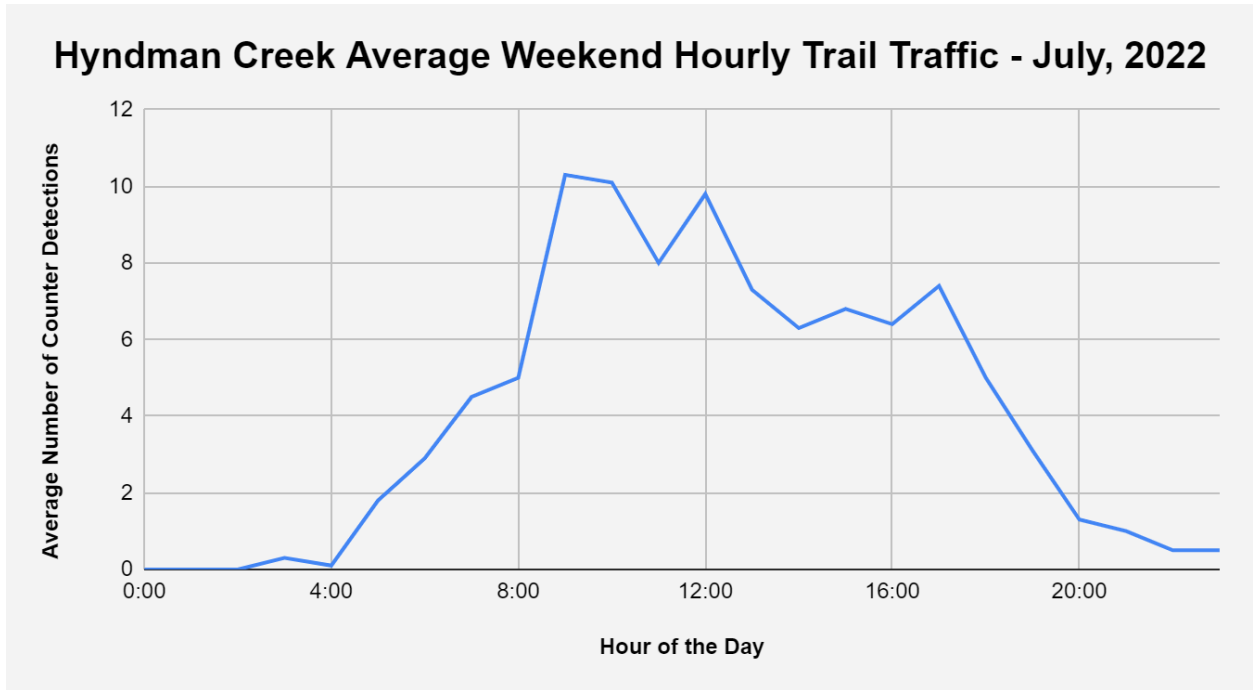


7-Day Average

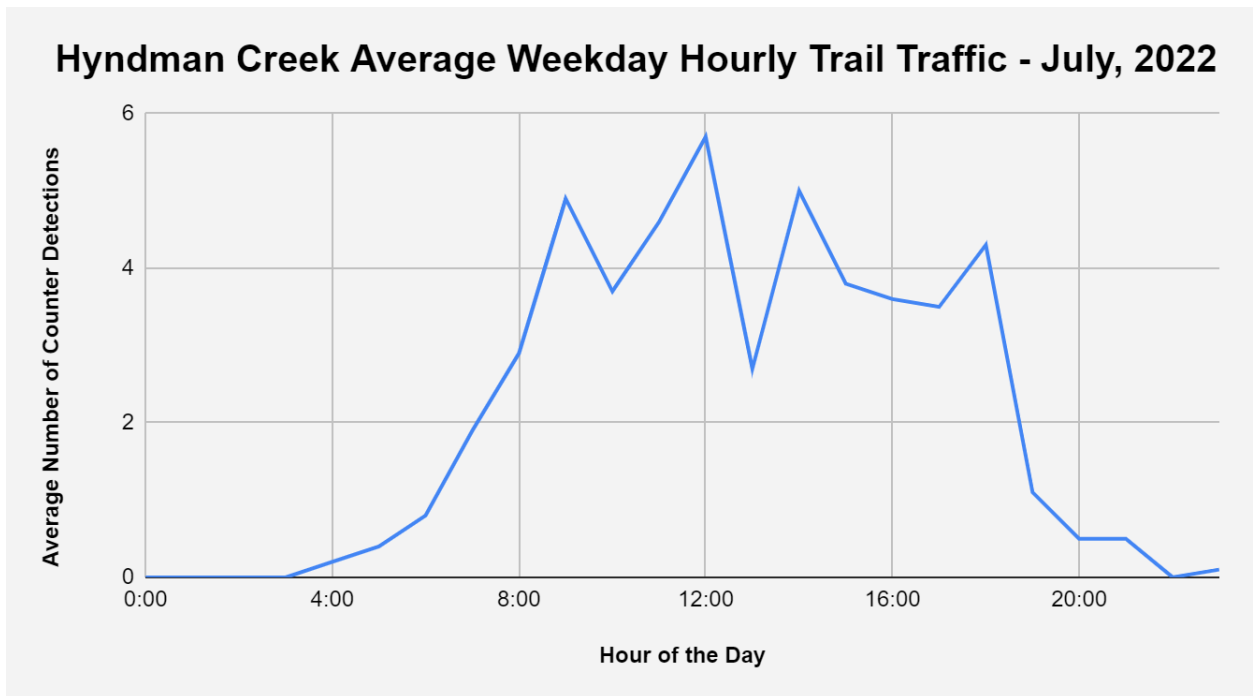


Hourly Average

Weekend



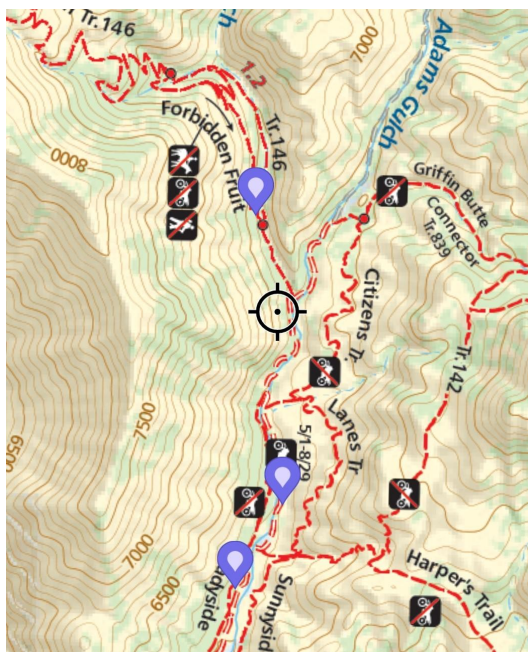
Weekday



Adam's Gulch

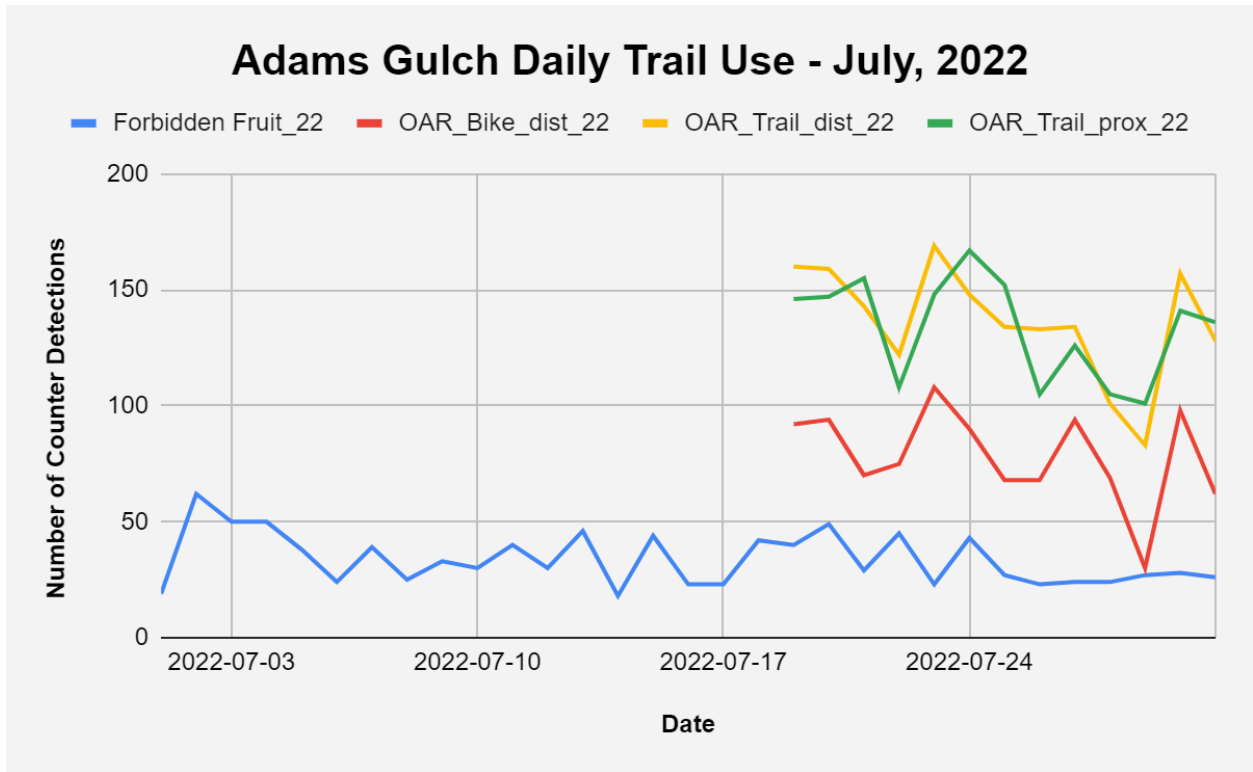
Counter Locations:

- Inner Old Adam's Road Tr. # 146 ("OAR_trail_prox_22")
- Outer Old Adam's Road Tr. #146 ("OAR_trail_dist_22")
- Forbidden Fruit Tr. #159 (At the top of the new "Low Hanging Fruit" extension)



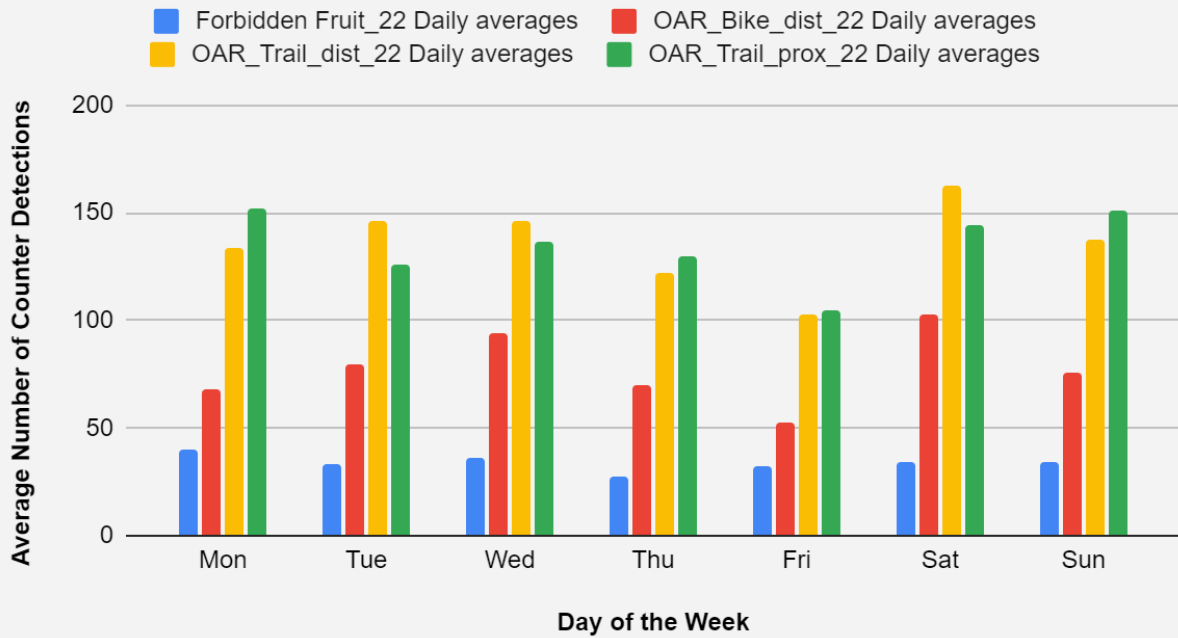
OAR counters present from July 18th-31st, 2022 (14 Days Total); Forbidden Fruit counters present from July 1st-31st, 2022 (31 Days Total).

Daily Counts



7-Day Average

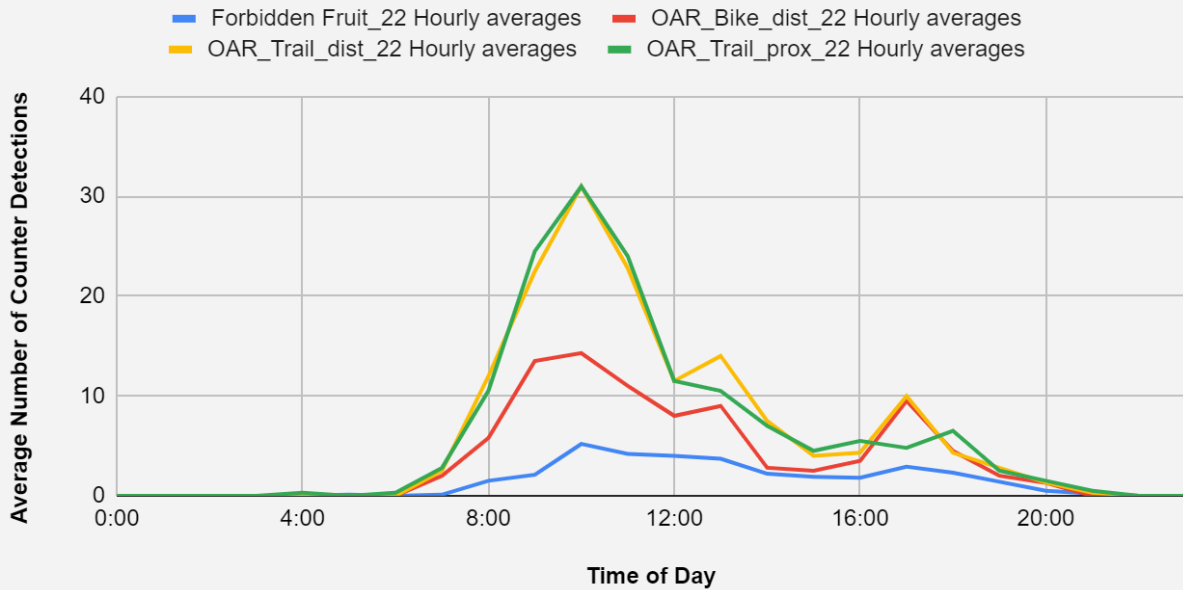
Adams Gulch 7-Day Trail Traffic Averages - July, 2022



Hourly Averages

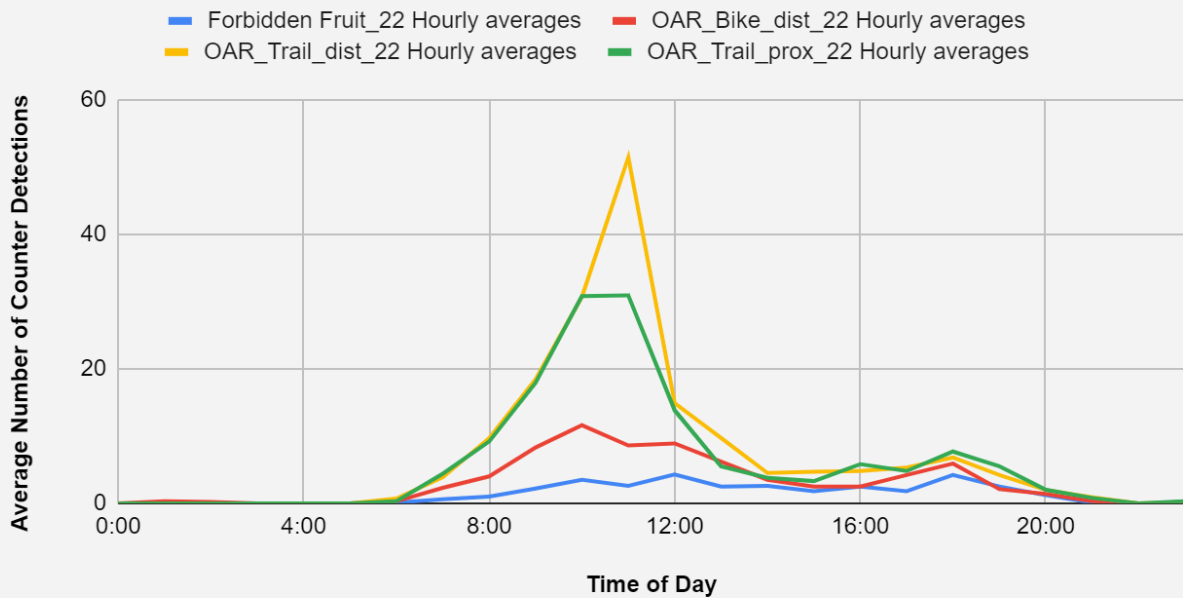
Weekend

Adams Gulch Weekend Average Hourly Trail Traffic - July, 2022

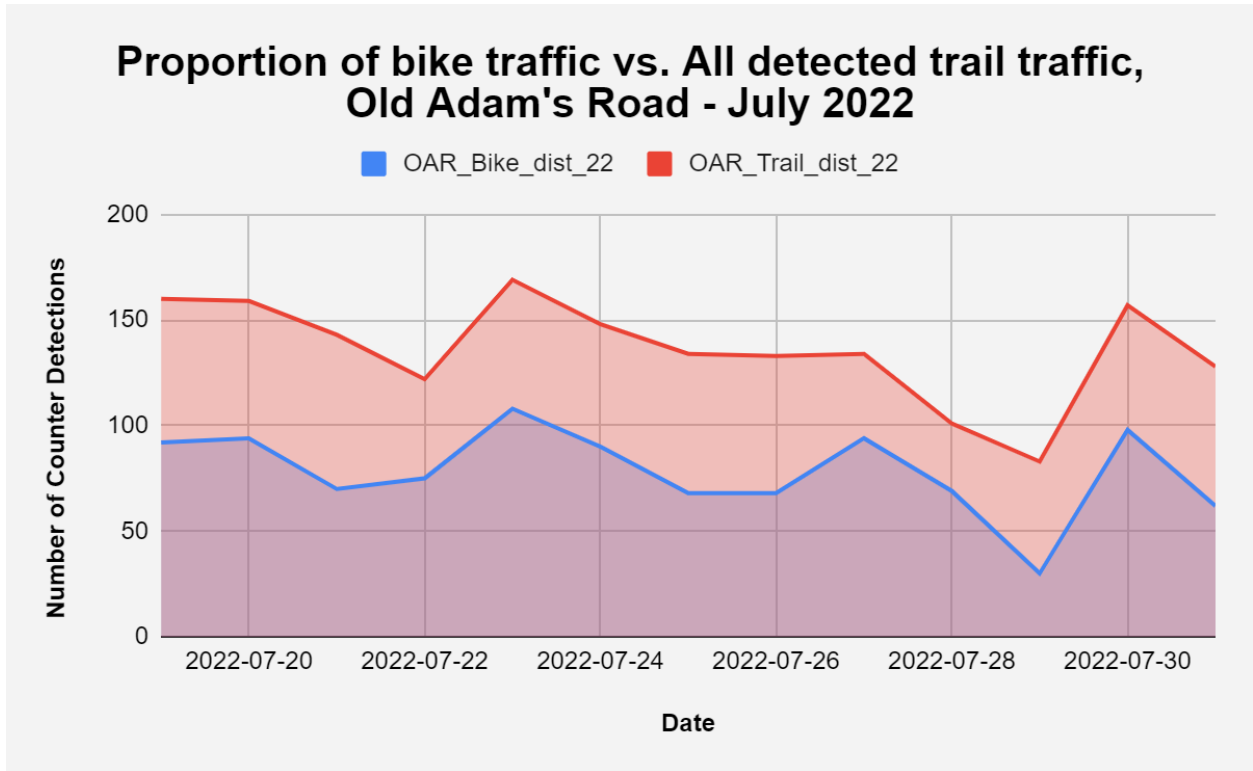


Weekday

Adams Gulch Weekday Average Hourly Trail Traffic - July, 2022



Detected bike traffic vs. All detected trail traffic



Average percentage of detected bike traffic, July 2022: 56.85% (June 2022=40.49%)

Pioneer Cabin and Long Gulch

Counter Locations:

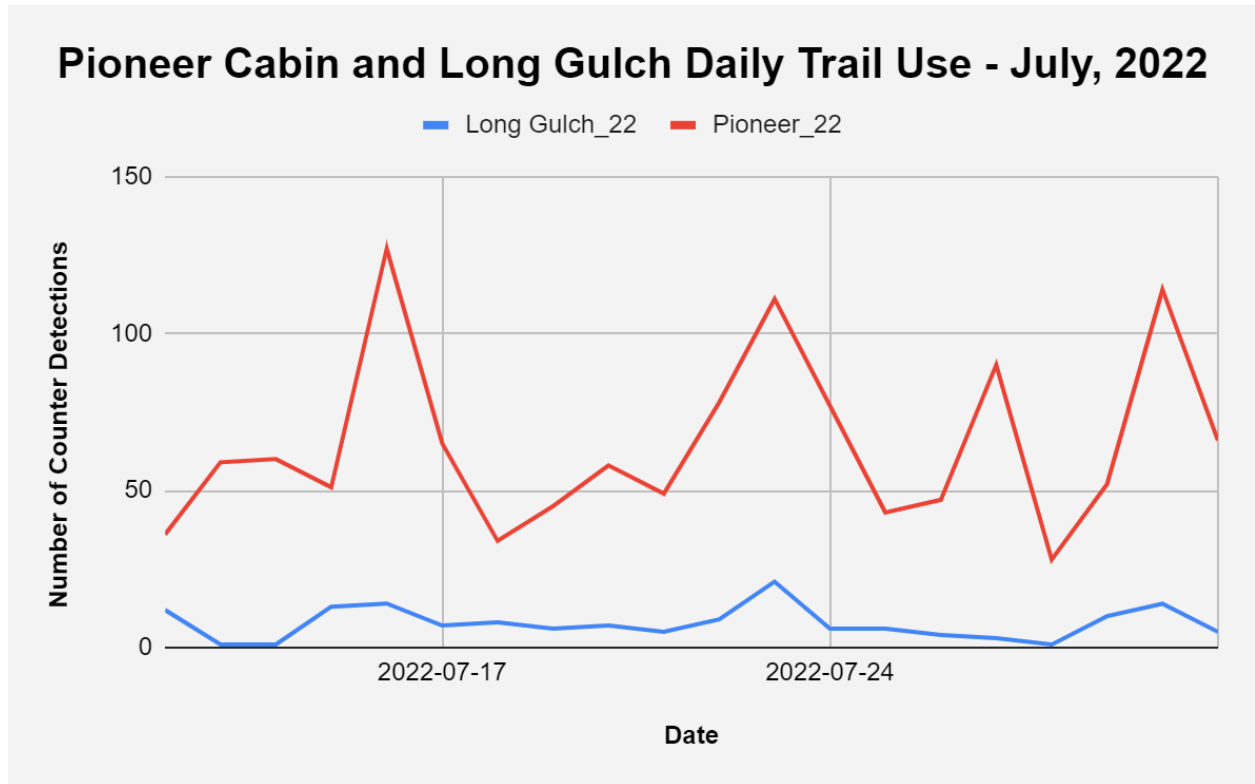
- Pioneer Cabin Tr. # 122
- Long Gulch Tr. # 123



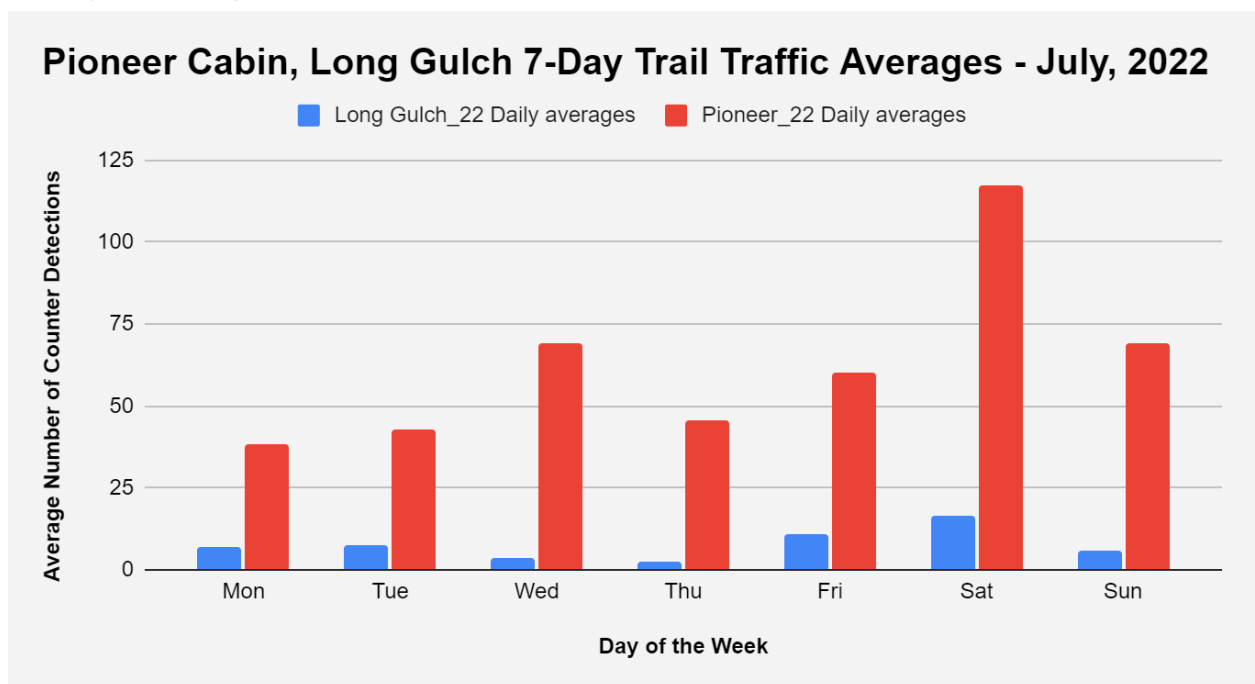
Red pin=Long Gulch counter, purple pin=Pioneer Cabin counter (both within quarter mile of trailhead parking lot).

Counters present from July 12-31, 2022 (20 Days Total).

Daily Counts

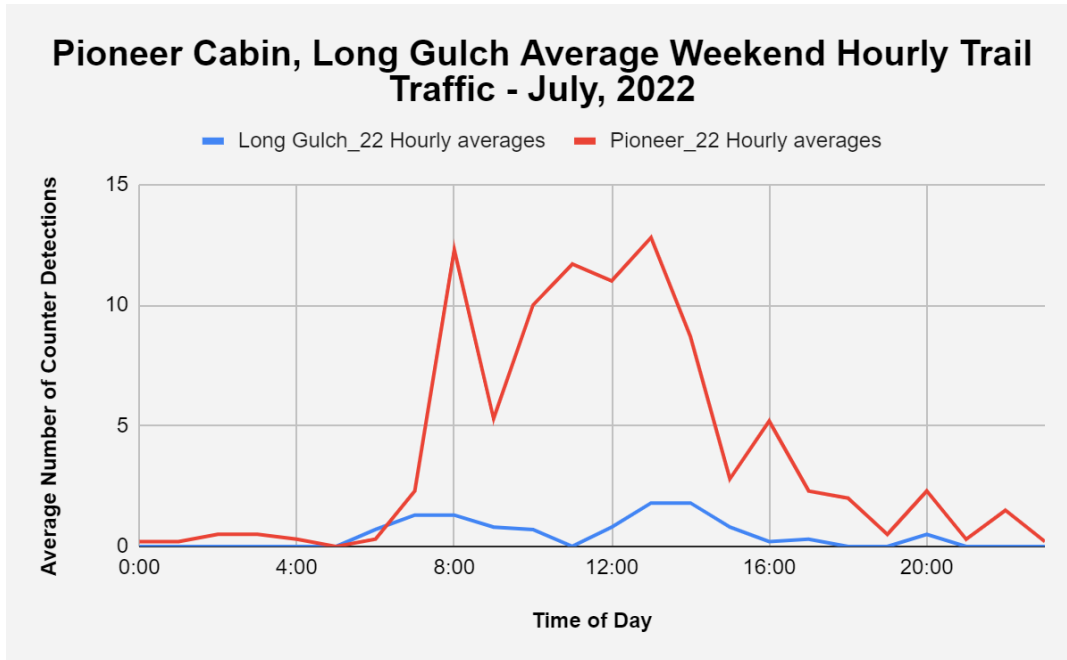


7-Day Averages

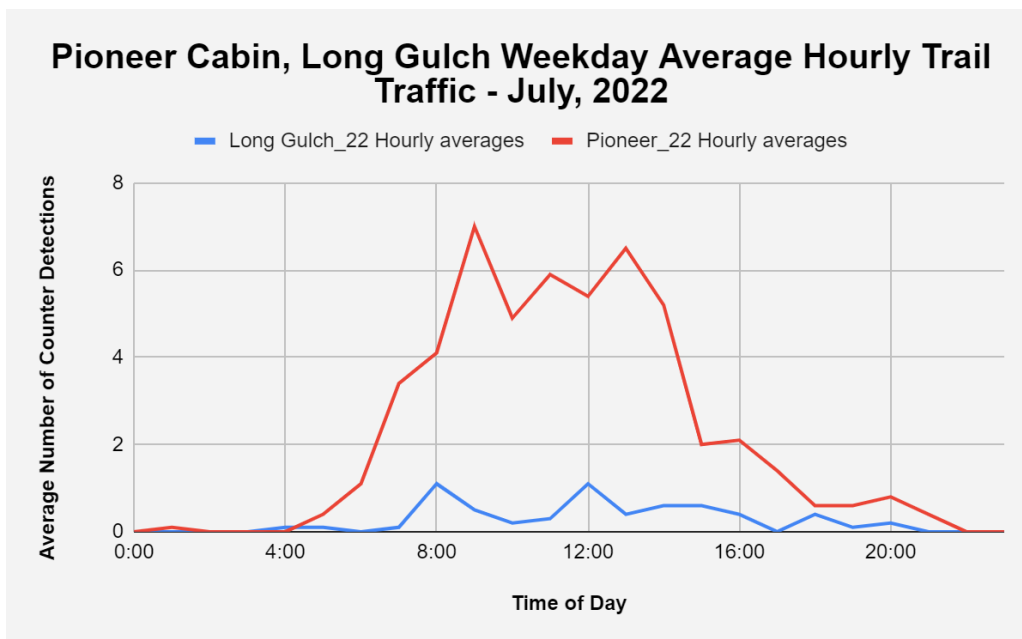


Hourly Averages

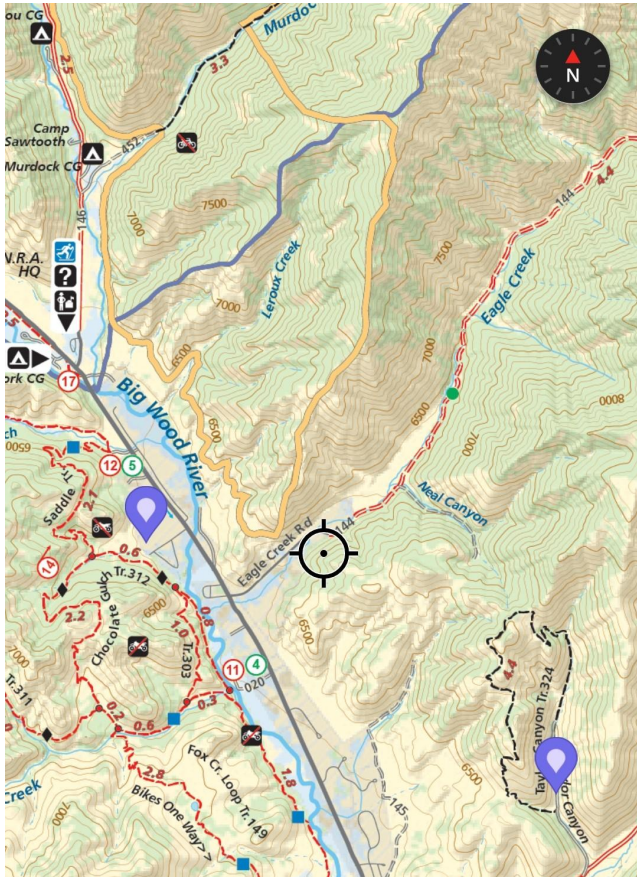
Weekend



Weekday



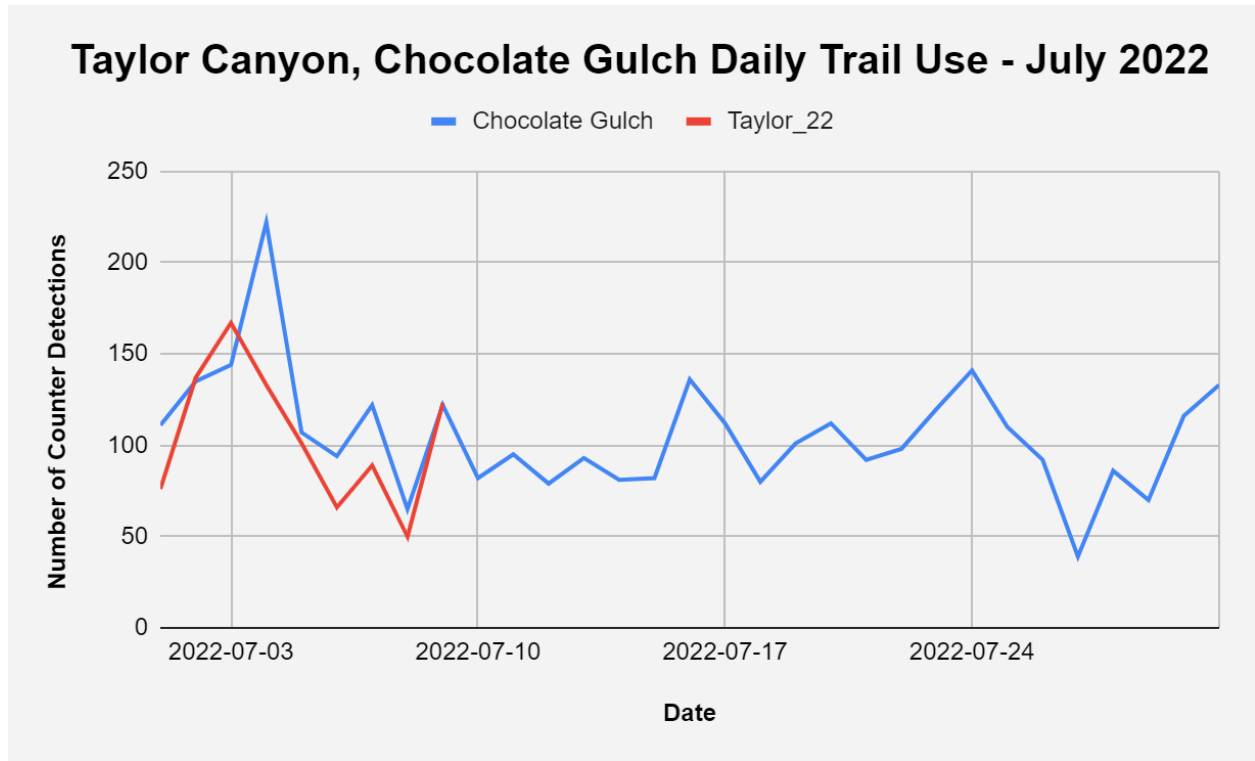
Taylor Canyon and Chocolate Gulch



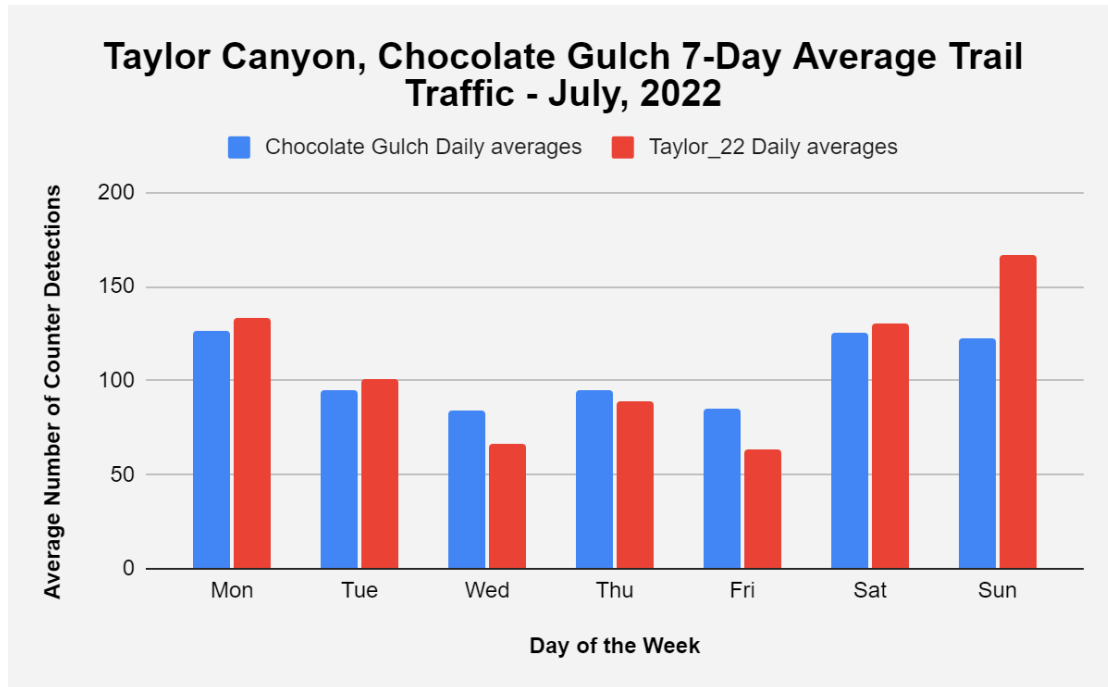
Taylor Canyon bottom right, Chocolate Gulch middle left

Taylor Counter present from July 1-9, 2022 (9 Days Total); Chocolate Counter present from July 1-31, 2022 (31 Days Total).

Daily Counts

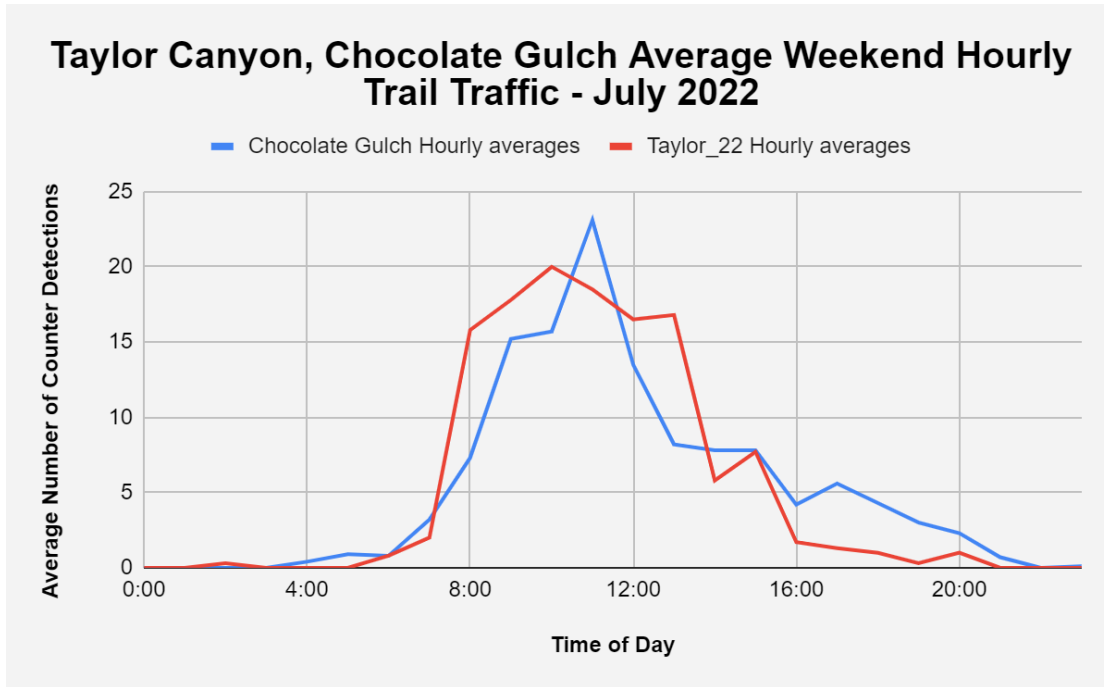


7-Day Averages

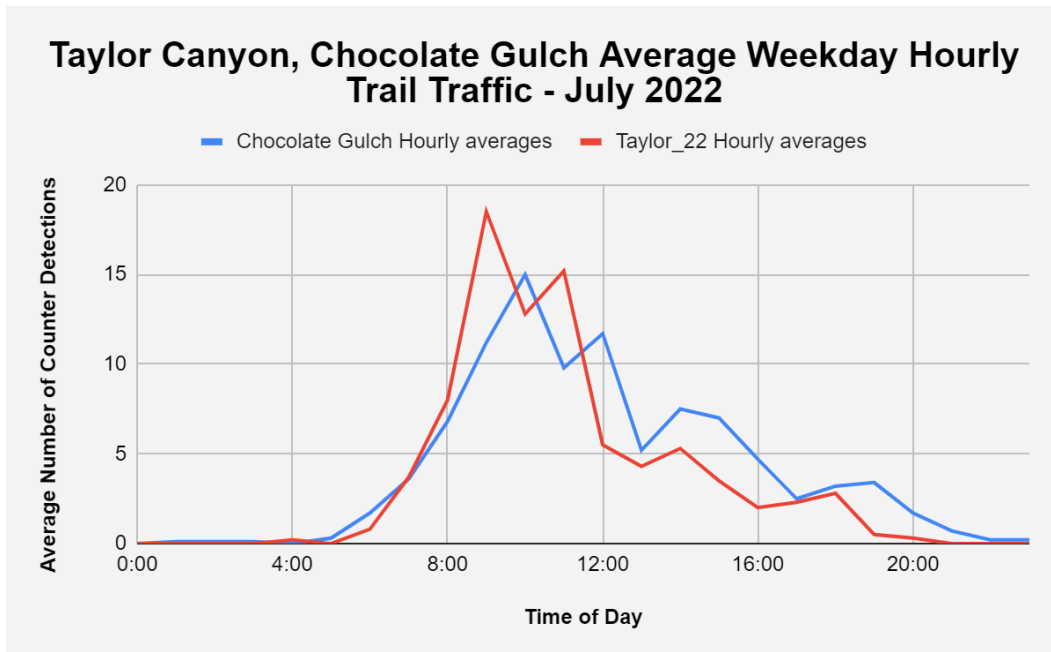


Hourly Averages

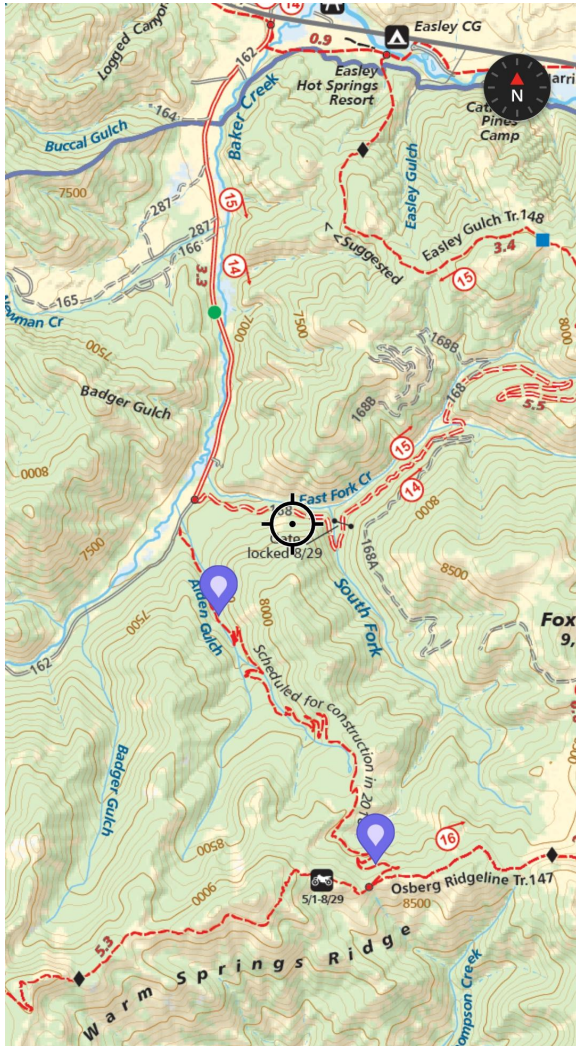
Weekend



Weekday



Alden Gulch

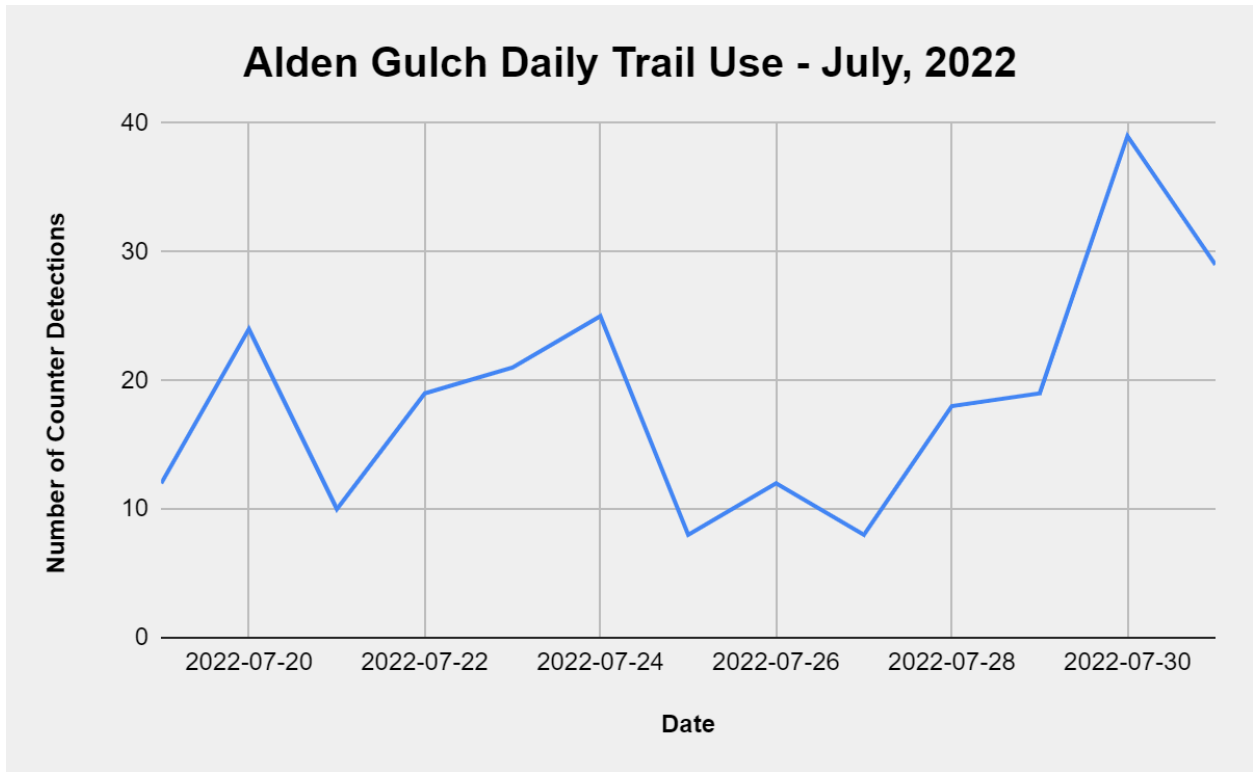


2 Counters assigned to Alden Gulch (Top and Bottom); Plant overgrowth interfered with accurate data collection for Alden Top counter in July - data not included in current analysis. Adjustments were made to counter placement location and accurate data is expected moving forward.

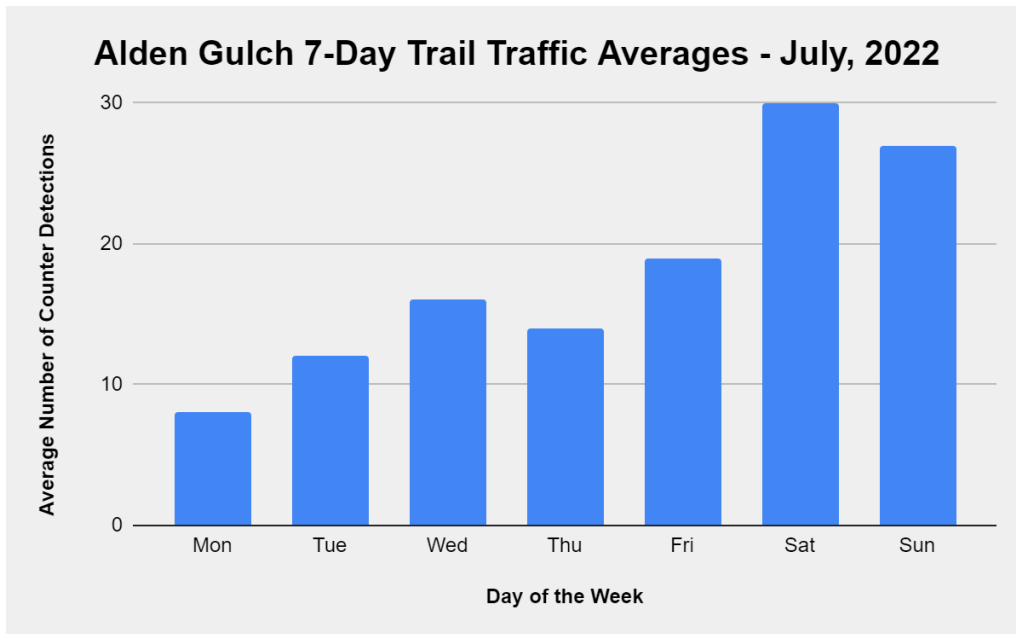
Only “Alden Bottom” will be analyzed in this Round Up.

Alden Bottom Counter present from July 19-31, 2022 (13 Days Total).

Daily Counts



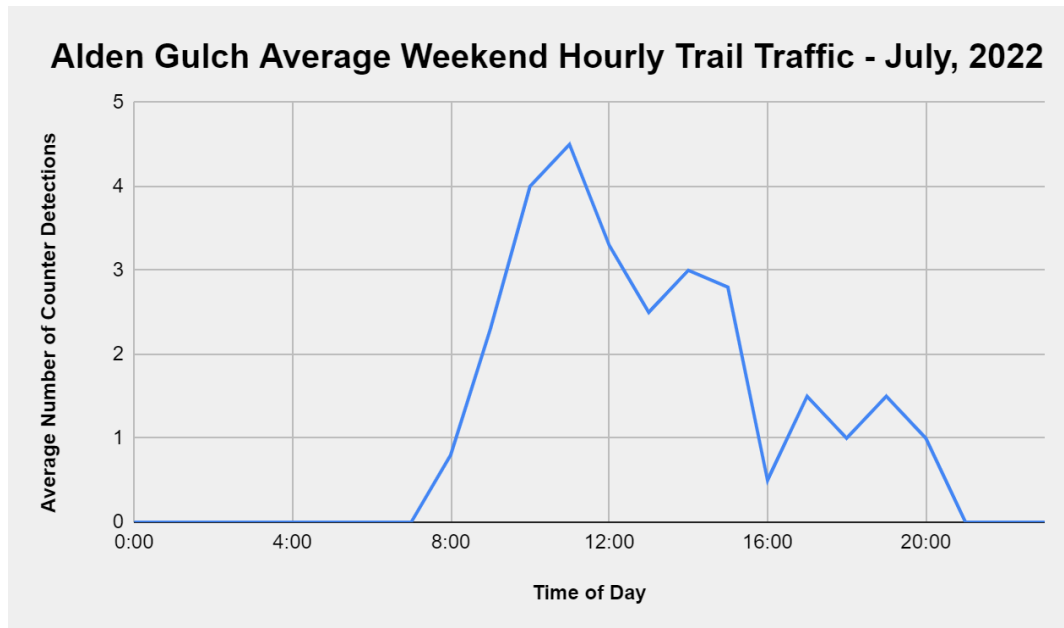
7-Day Averages



Hourly Averages*

*Significant game tracks have been observed along the Alden Gulch trail during data collection sessions; late night trail traffic is likely a representation of wildlife/game travel.

Weekend



Weekday

Alden Gulch Weekday Average Hourly Trail Traffic - July, 2022

