

TRAIL MONITORING 2022

Presented by the Wood River Trails Coalition



Trail Monitoring: What is it, and why do we do it?



**Systematic way of
collecting data on trail use**



- Supports WRTC mission and programming
- Builds partner capacity for trail resource improvements and informed management
 - Cool information for you, the public!



Presentation Outline

- Background and Goals
- Project Structure and Scope
- 2022 Trail Counter Data
- 2022 Totals and Year to Year Comparisons
- Impacts of Trail Monitoring Data



From pilot project, to established program



2012 Wood River Valley Trail Study

2013 Beaver Creek Fire

2014-18 Greenhorn, Osberg, Deer Creek, Alden
Gulch Rehab/Rebuild work

2019 Wood River Bicycle Coalition restructures, rebrands
□ **Wood River Trails Coalition is born!!**

2021 Wood River Valley Trail Survey
conducted

- 7%* population growth from 2020-2021
- **1,628 (approx.) new residents, first time over 24K**

2022 **WRTC Trail Monitoring
Program formally established**

Changes in 2022:

- More trail counters, new style of trail counter
- Increased geographic scope
- No survey questionnaire



A photograph of two hikers standing on a grassy trail, looking out over a vast mountain range under a clear blue sky. The hiker in the foreground is wearing a backpack and a cap, while the second hiker is slightly behind. The mountains in the distance are covered in green vegetation with visible trail lines.

2022 Trail Monitoring Goals

Common theme: Better range of data, improved estimates, more representative results.



A person wearing a black helmet and sunglasses is riding a mountain bike on a dirt trail. A dog is running alongside the bike. The background is a wooded area with yellowing leaves, suggesting autumn. The image is used as a background for a presentation slide.

GOAL #1: User Groups

Increase data precision for user-group breakdowns (Adams Gulch and Greenhorn Gulch trail systems).

GOAL #2: Trail Use Patterns

Increase data precision for trail use patterns in longer, multi-access trail systems.



A photograph of a dirt trail winding through a forest. In the foreground, a tan backpack sits on the ground. To the left, a tree trunk has a small electronic sensor attached to it with a black strap. The background shows more trees and a continuation of the trail.

GOAL #3: Better Data

Improve the accuracy of trail monitoring data and produce estimates with increased precision, compared to 2021.

Partners and Support




**OPEN TO
BIKE TRAFFIC
ONLY**

**(All other users please
continue up Eve Gulch Trail)**

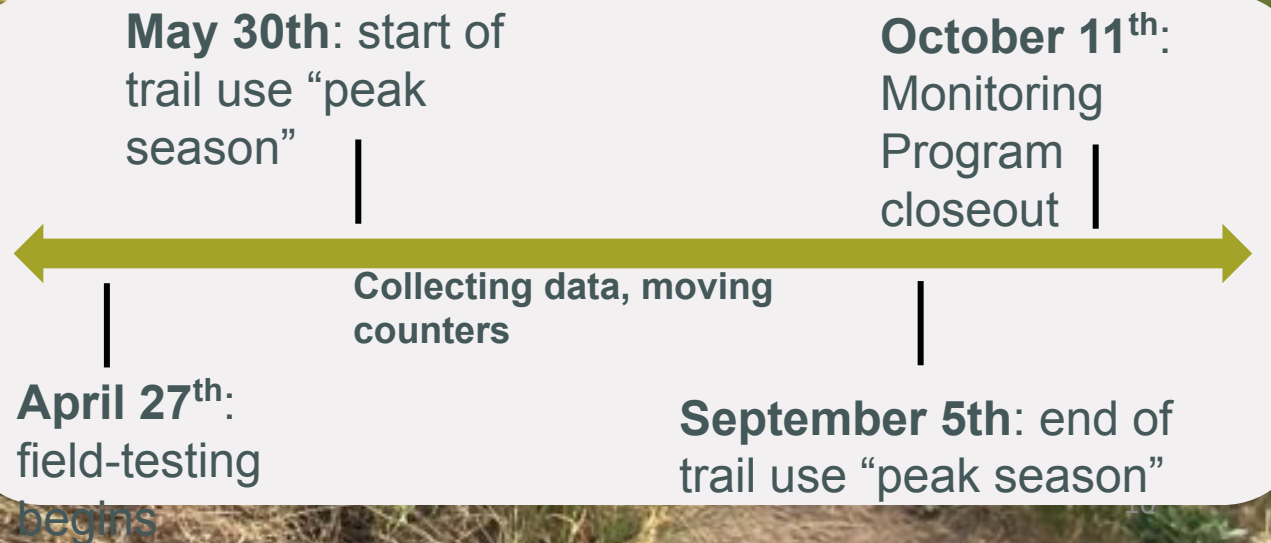


Trail adopted by the
Wood River Trails Coalition



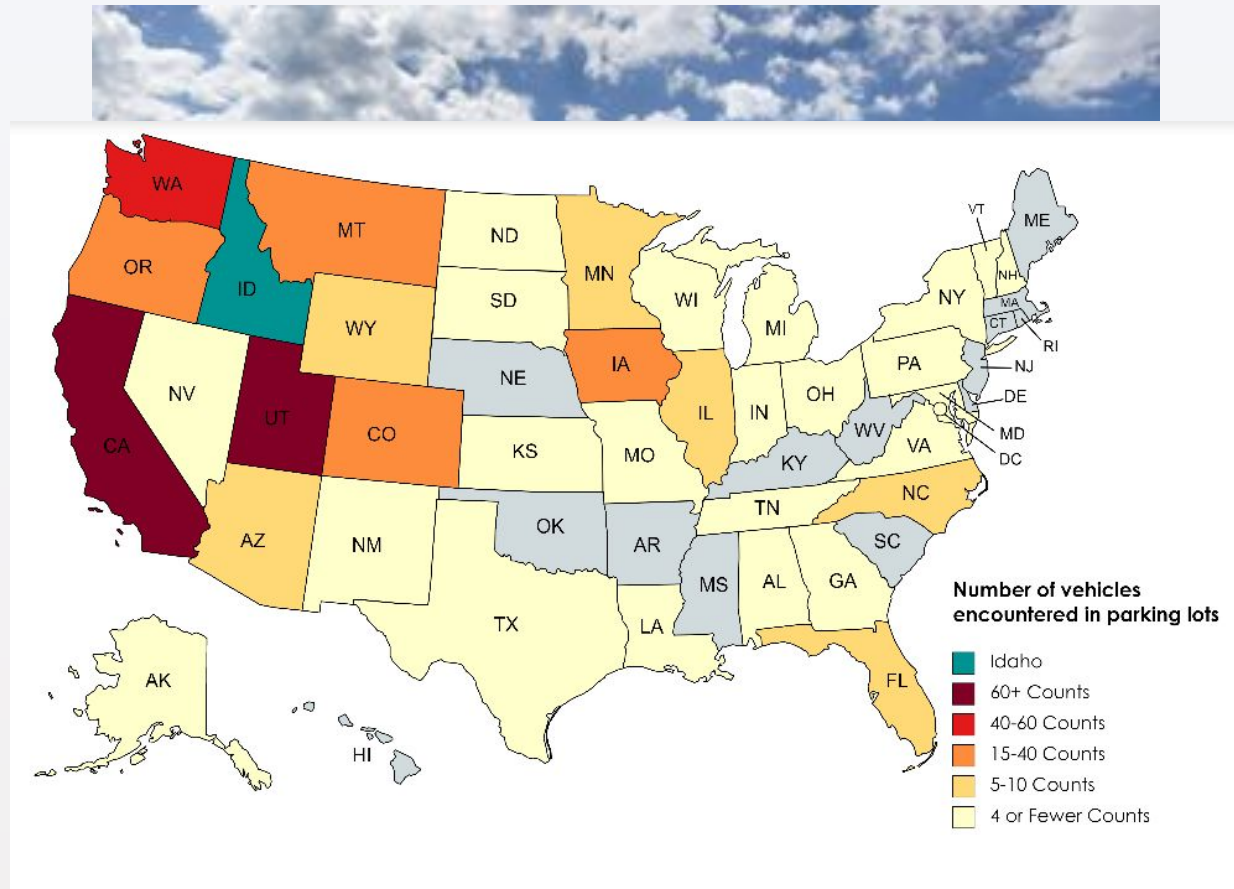


Tools and Timeline



Parking Lot Counts

- Helps assess balance between trailhead facilities and trail use
- “Low lift” means of collecting in-state vs. out-of-state trail user data
- With more data, parking lot counts could be used to estimate trail traffic levels during periods with no counters □ builds capacity for growing trail monitoring and data set



Ground Truthing

Making direct, visual observations of trail use at trail counter locations



Comparing observation data to counter data

Pros:

- Helps assess equipment reliability
- Impact of dogs on data
- Directionality, specific user group breakdowns, etc.

Cons:

- Big time-sink
- Requires A LOT of data to be effective (but we're working on this!)



TRAFx Trail Counters: One tool in the tool kit

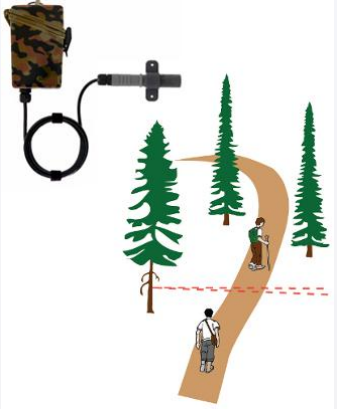


Photo courtesy of Perry Boyle,
ground truther extraordinaire



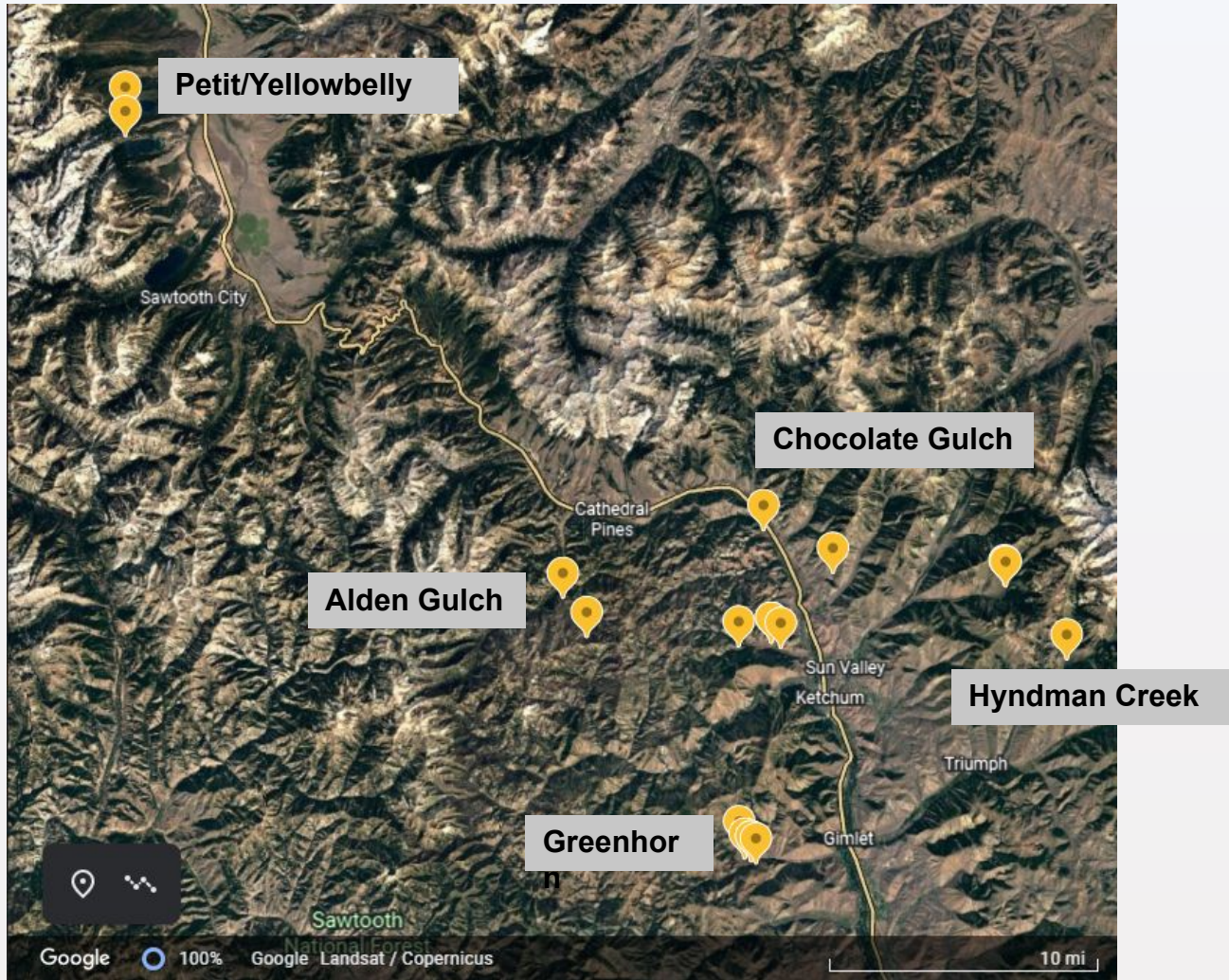
Ground truthing,
parking lot counts



Key things to keep in mind with trail counters and monitoring:

- Counters don't distinguish direction of travel
- Counters CAN detect animals – but not always*
- Average Daily Total □ Other Totals
- Peak Summer Season= 100 days (on average, 99 days from Memorial Day to Labor Day)

Scope and Scale



- 15 Locations
- 8 New Locations in 2022
- 1552 Days of Data (2022)
- 24 total trail locations monitored to date

Trail Monitoring Locations, 2022

- Greenhorn Tr. #156
- Imperial Gulch Tr. 315
- Cowhorn/Cow Creek Connector Tr. #153
- Hyndman Creek Tr. # 166
- Old Adams Road Tr. #177 – Inner and outer (Proximal and Distal)
- Forbidden Fruit Tr. # 159 – “Low Hanging Fruit”/ New Section
- Pioneer Cabin Tr. # 122
- Long Gulch Tr. # 123
- Taylor Canyon Tr. # 324
- Chocolate Gulch Tr. # 312
- Alden Gulch Tr. # 144 – Top and Bottom
- Petit Creek Tr. #095
- Yellowbelly Tr. #096



2022 Trail Counter Data

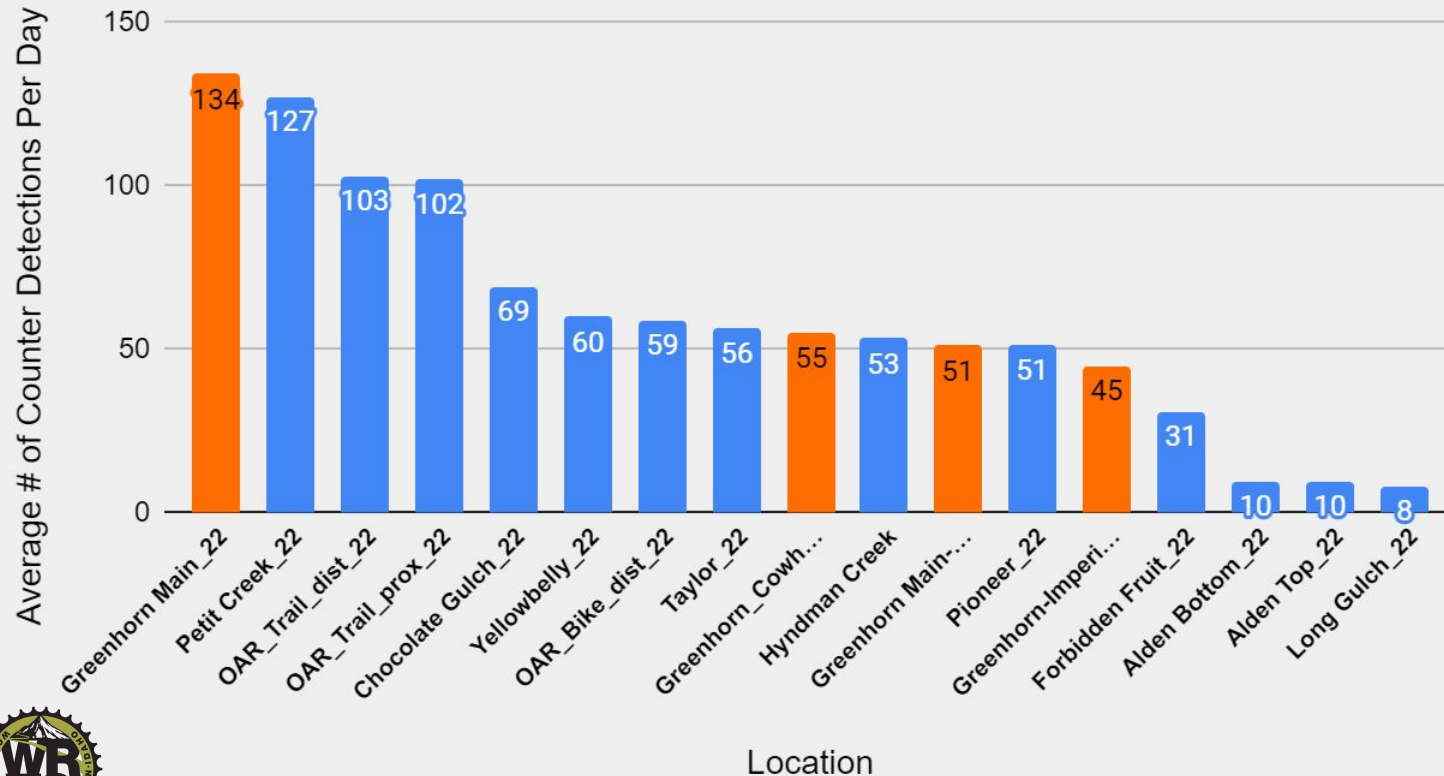


GREENHORN GULCH TRAILHEAD:

GREENHORN TR. #156, IMPERIAL GULCH TR. #315, COWHORN TR. (no number)

Greenhorn Tr. #156 monitored with **both infrared and bike counter**

Comparing Average Daily Traffic Values



Highest recorded counts:

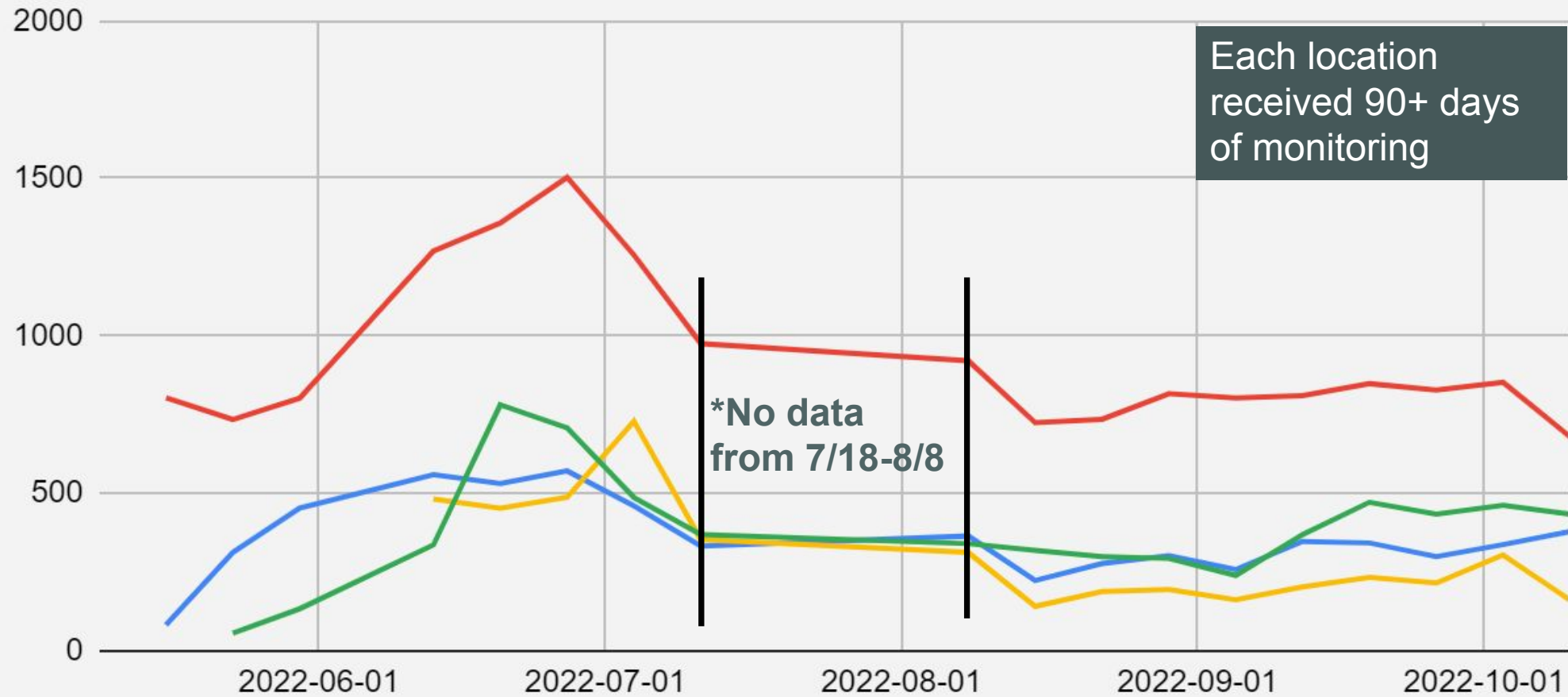
GH-Main: 308 (July 3rd)
GH Bike: 158 (July 3rd)
Imperial: 157 (July 9th)
Cowhorn: 161 (July 3rd)



Greenhorn Gulch Weekly Trail Traffic Totals* - 2022 Trail Monitoring

Approx. Number of Counter Detections

Greenhorn Main - Bike_22 Greenhorn Main_22 Greenhorn-Imperial_22
Greenhorn_Cowhorn_22

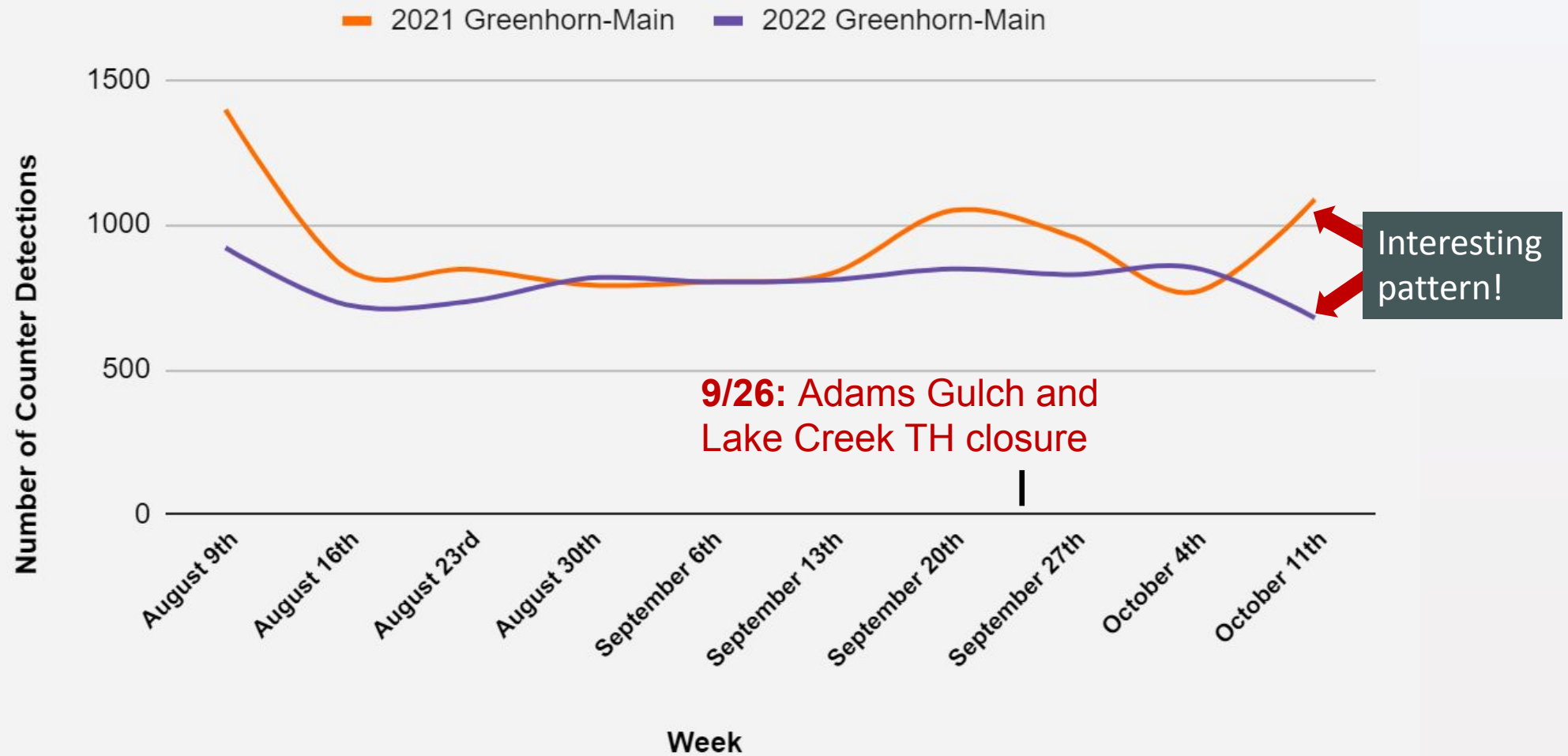


Week of the Season

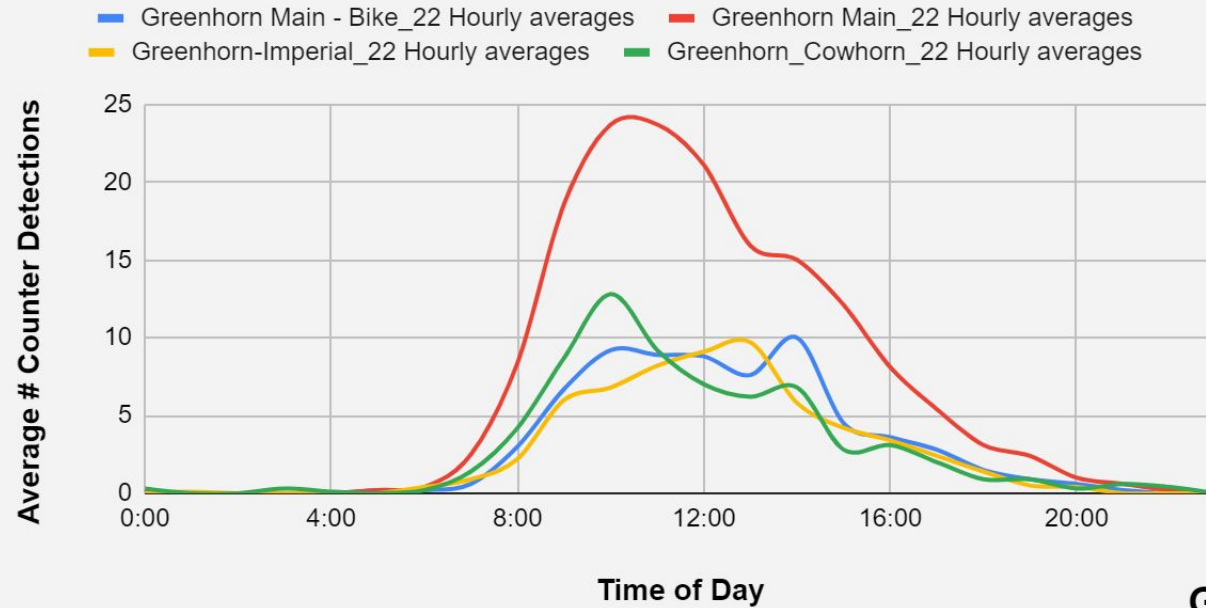


Comparing Trail Traffic at Greenhorn Year to Year

Weekly Trail Traffic on Greenhorn Tr. # 156 - 2021 vs. 2022

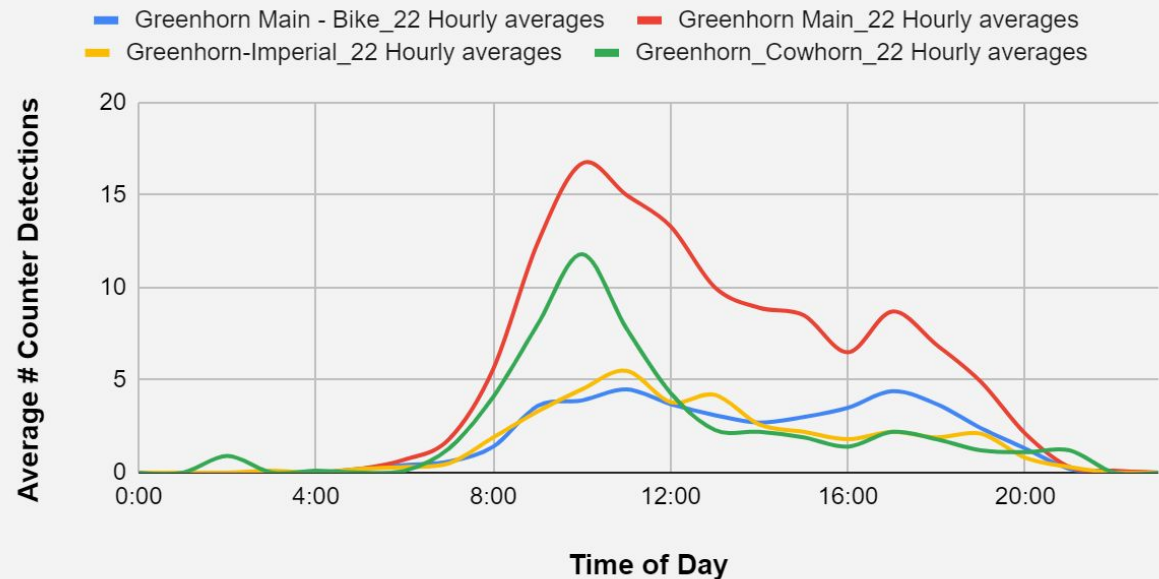


Greenhorn Gulch - Weekend Hourly Trail Traffic Averages - 2022 Trail Monitoring



Weekend vs. Weekday Hourly Trail Traffic Patterns at Greenhorn

Greenhorn Gulch - Weekday Hourly Trail Traffic Averages - 2022 Trail Monitoring

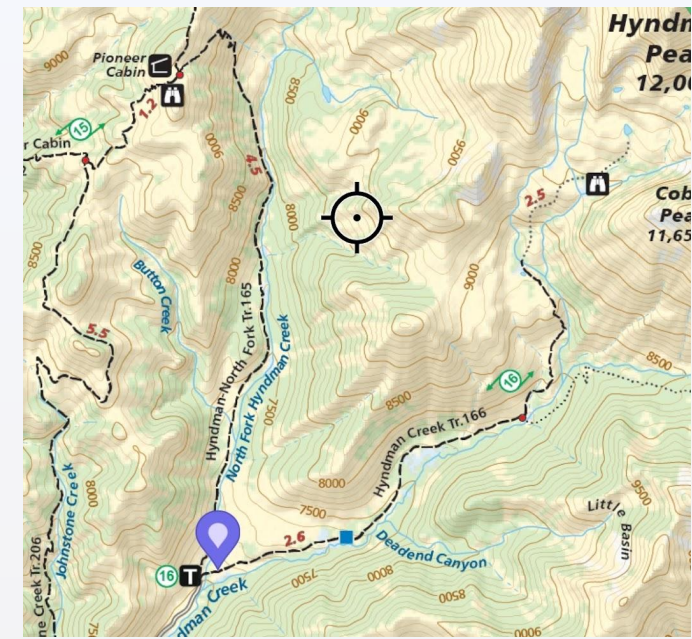
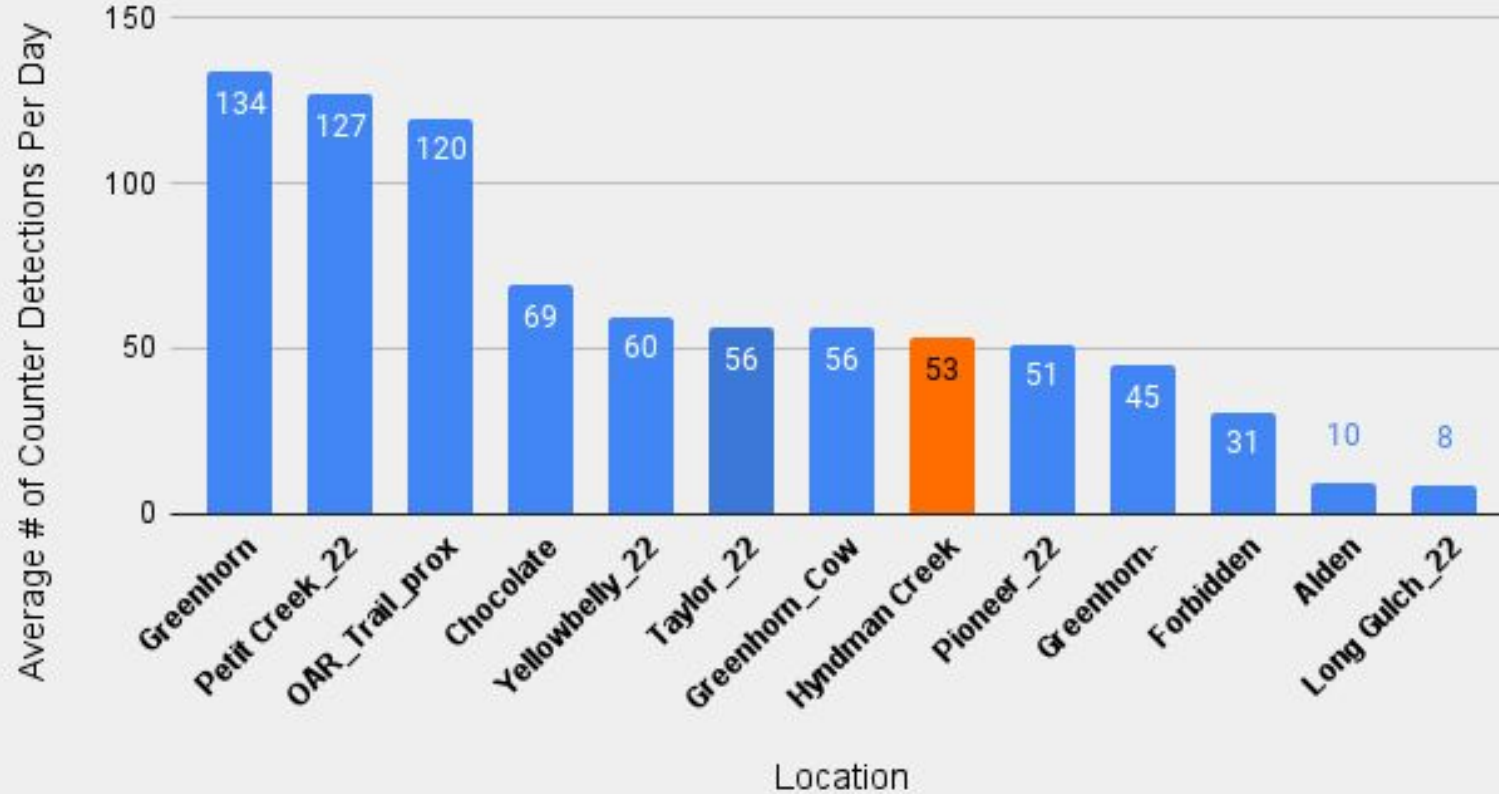


- Use in highest from 10AM-12PM – **typical across majority of monitoring locations**
- Imperial Gulch experiences more significant traffic changes weekend to weekday
- Afternoon weekday trail traffic on Greenhorn-Main is interesting (Post work? Cooler temps?)



HYNDMAN CREEK TR. #166

Comparing Average Daily Traffic Values



Highest recorded count:
159 (July 30th)

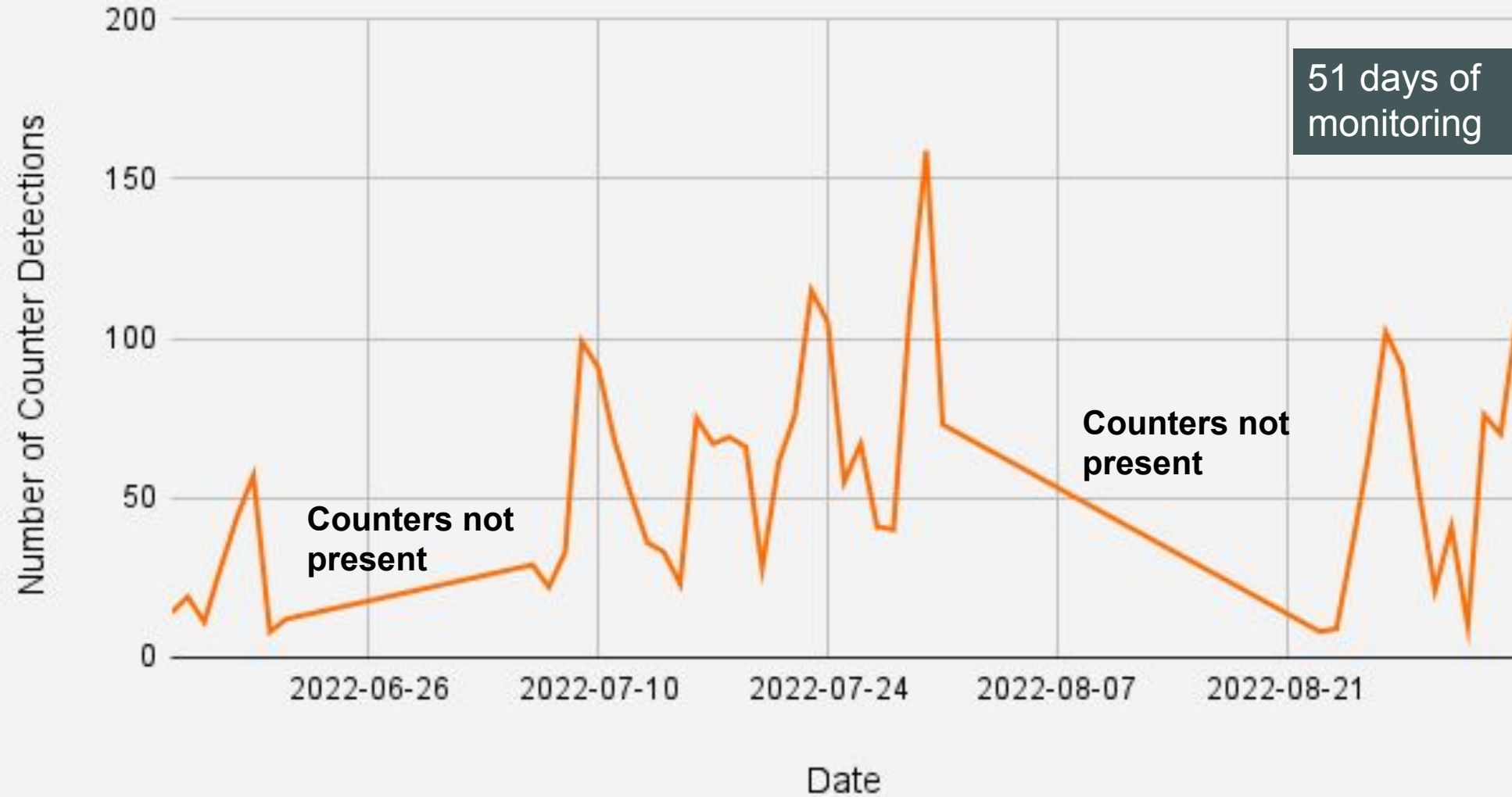
Lowest recorded count:
8 (June 20th, August 23rd)

Busiest day on avg: **Saturday**

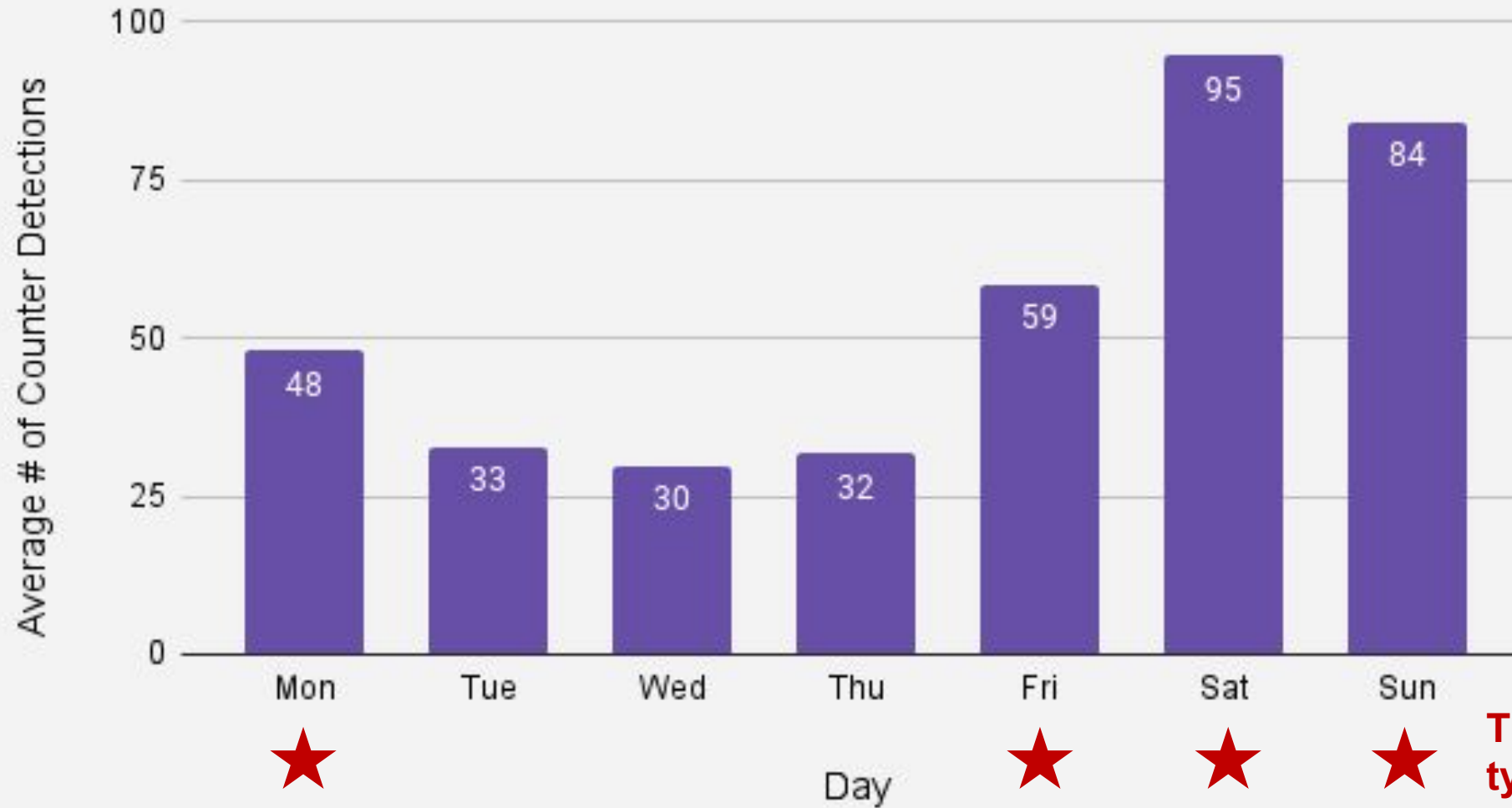
Busiest time on avg: **10AM-12PM**



Hyndman Creek Trail - Daily Trail Traffic



Hyndman Creek 7-Day Trail Traffic Averages



This 7-Day pattern is typical across majority of locations

Unique Opportunity for Analysis at Hyndman Creek

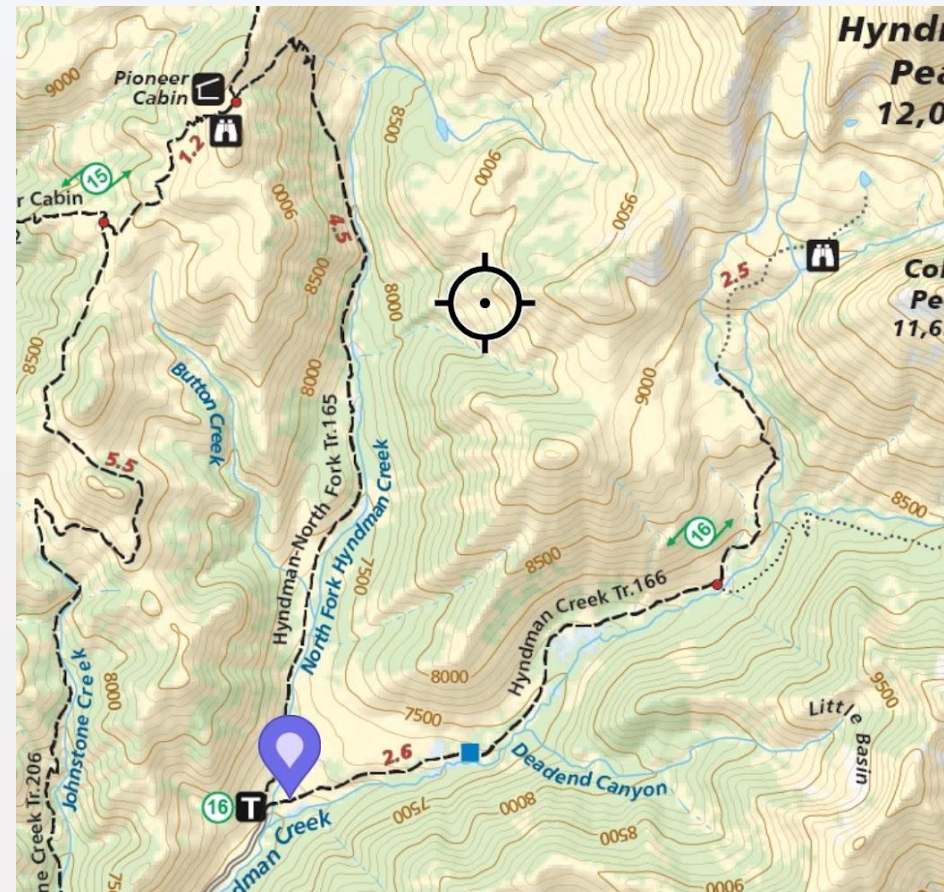
Using “Average Daily Detections” value (53) for days with no data...

Peak Season, Total Approximate
Traffic: **5,328 Detections**

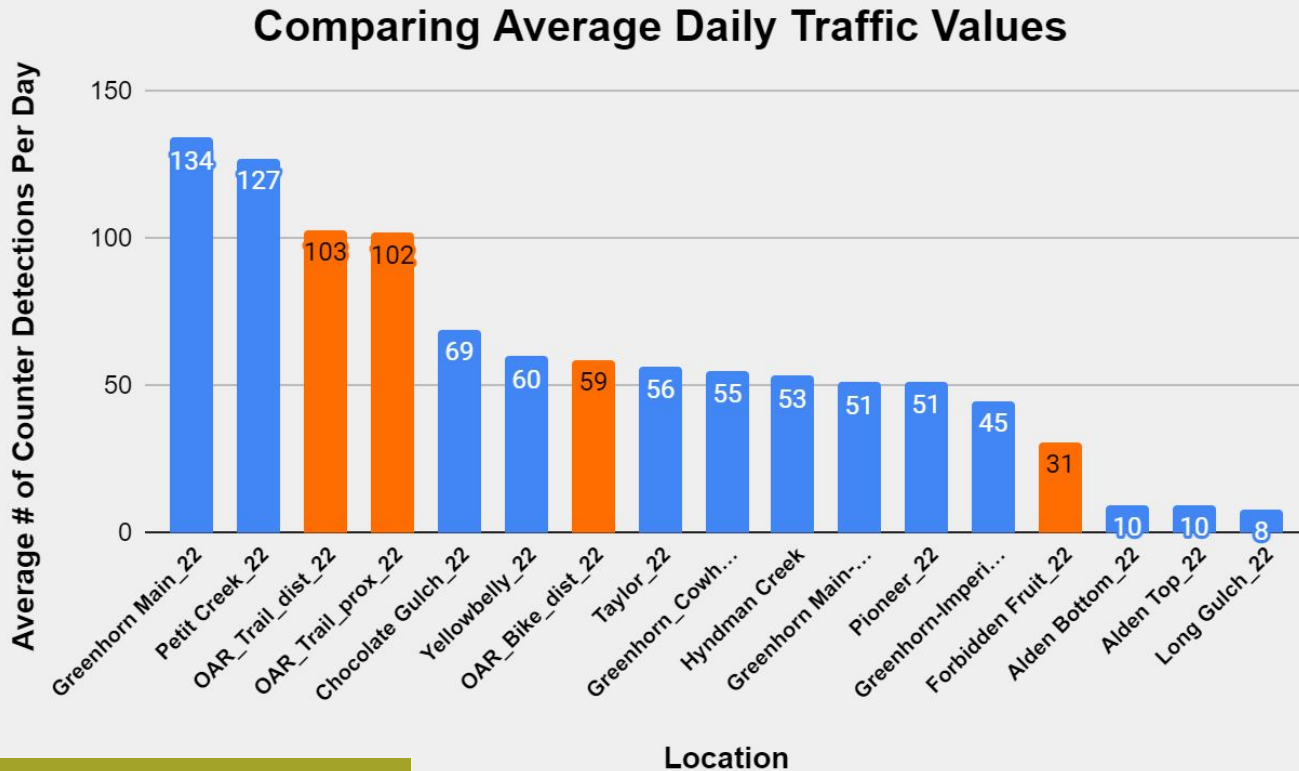
Assumption: “All users travel out and back on
Hyndman Creek Tr. #166”

Estimated number of individual user days, Peak
Season:

2664



ADAMS GULCH (Old Adams Road Tr. #146 - inner and outer; Forbidden Fruit Tr. #159)



2021 Avg. Daily
Detection: **156**

*Note: Adams Gulch averages include
data following trailhead closure*

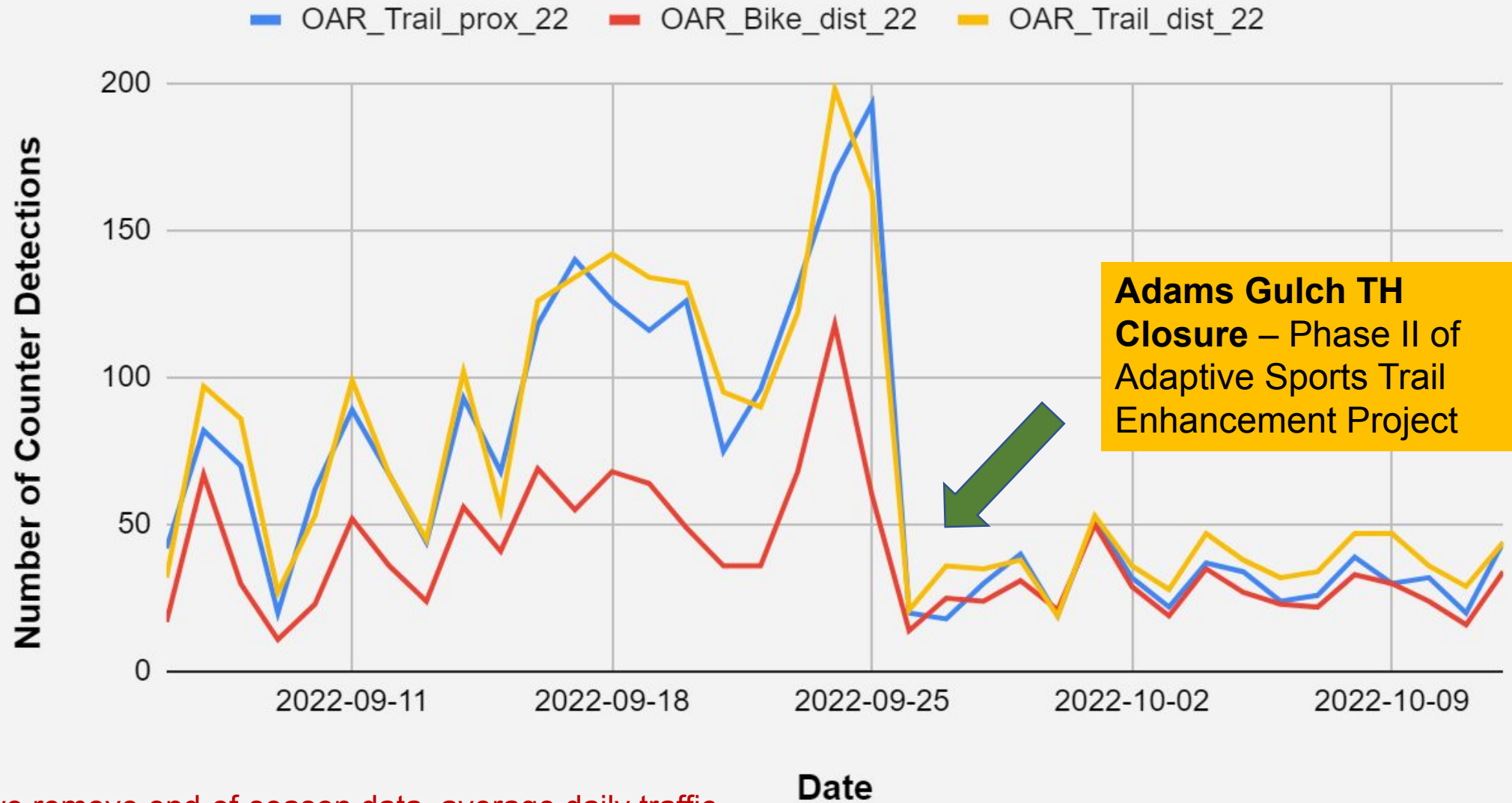


Forbidden Fruit:

- Only open to non-moto bike traffic
- Only open to 1-way travel (1 detection=1 user day)
- Counter placed at beginning of new “Low Hanging Fruit Section”



End-of-Season Daily Trail Traffic on Old Adams Road

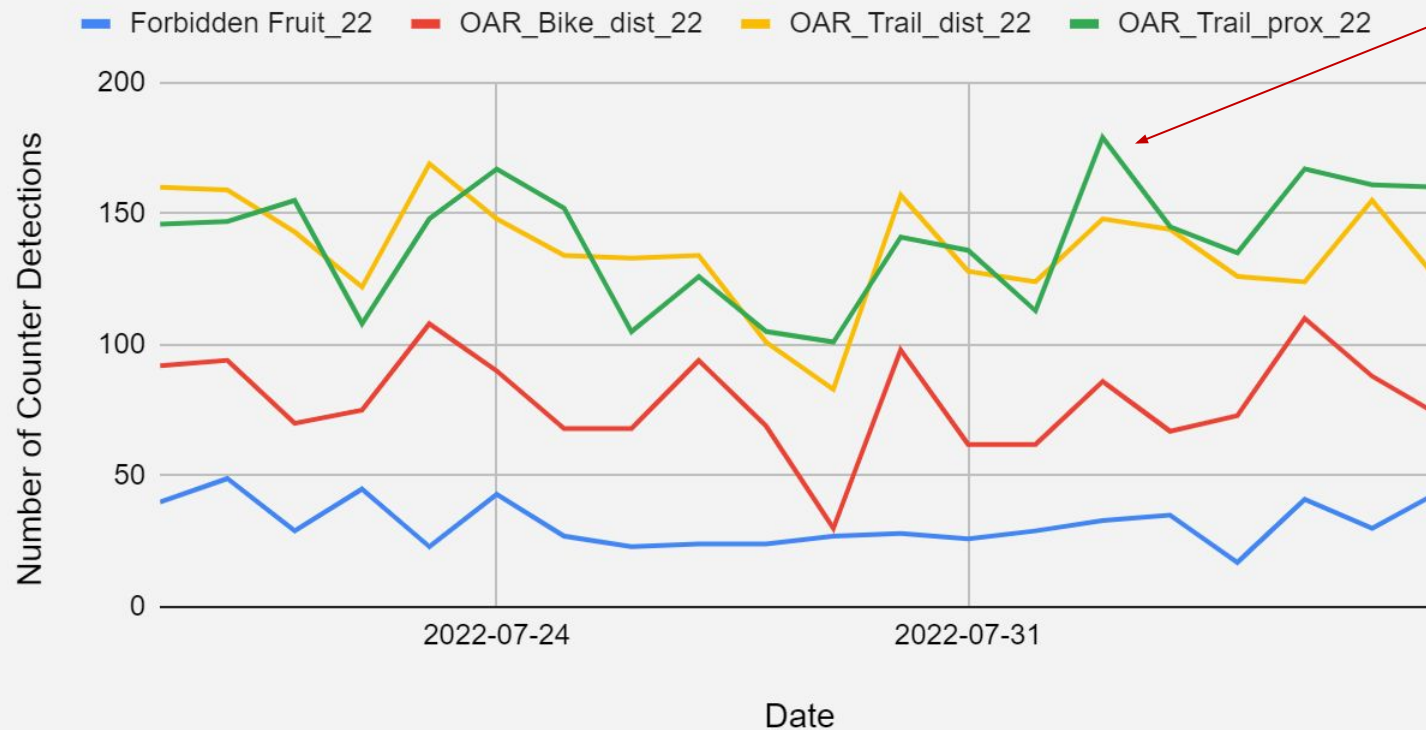


*If we remove end-of-season data, average daily traffic value only increases by 6-10 detections across sites, respectively ☐ **not a huge effect on totals***



Interpretations for trail system traffic patterns, provided by trail monitoring data

Adams Gulch Daily Trail Traffic - July 19th-August 7th, 2022



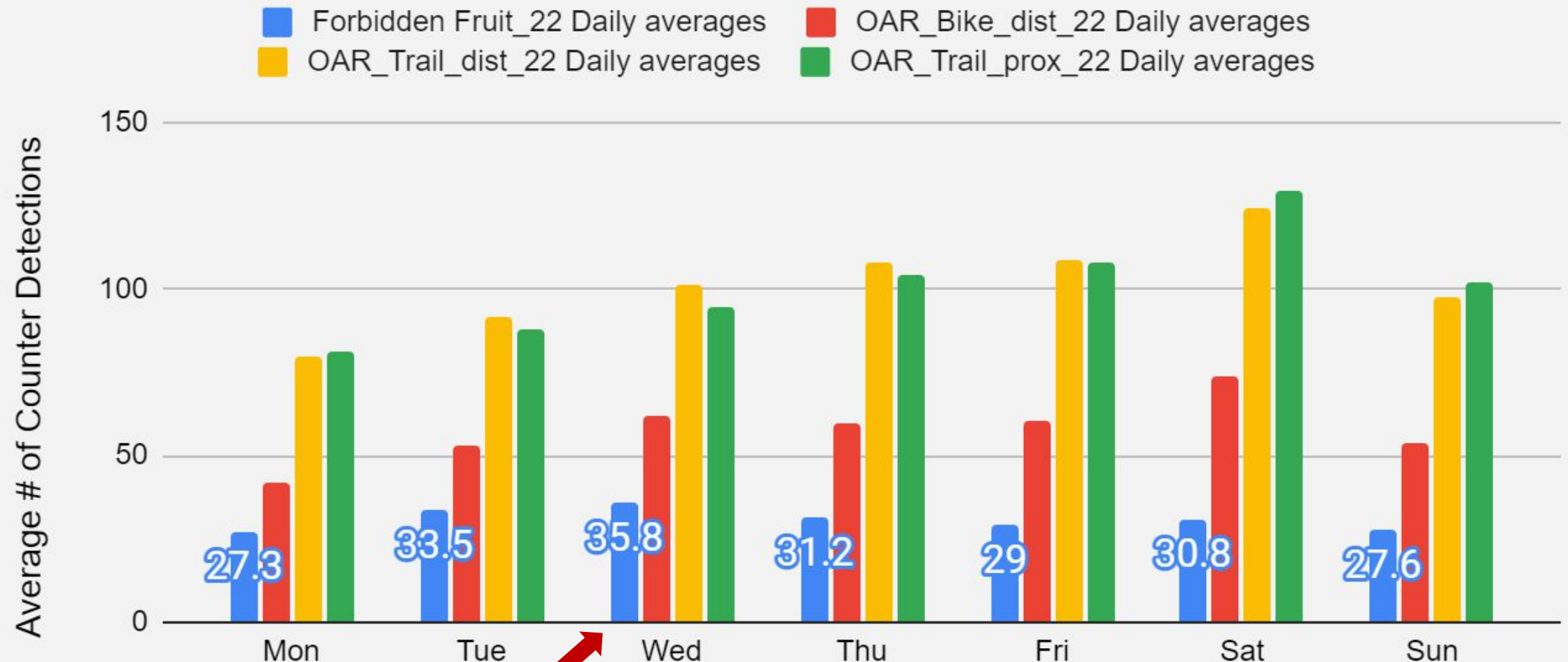
Possible indicator of higher “inner gulch” trail traffic



Looking to apply similar strategy at even further extents in future years ☐
growing dataset and understanding



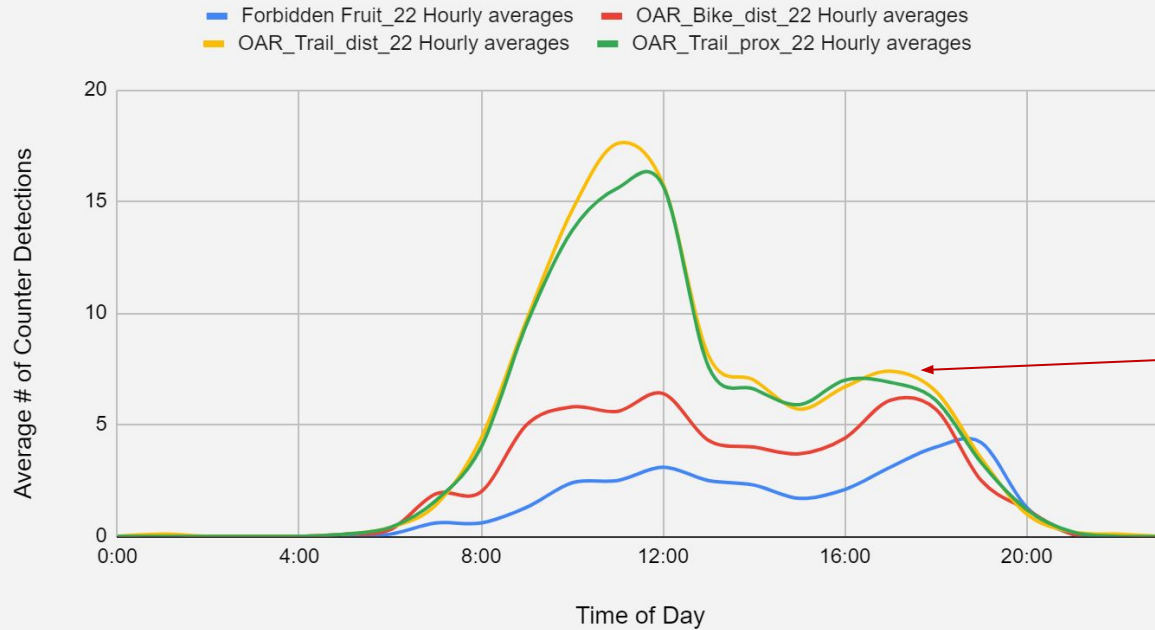
Adams Gulch 7-Day Trail Traffic Averages - Trail Monitoring 2022



Forbidden Fruit: The **only location** whose highest 7-day average is **not on a Sat/Sun!**



Adams Gulch Weekday Hourly Trail Traffic - Trail Monitoring 2022



Hourly trail traffic patterns at Adams Gulch – Weekday vs. Weekend

Late afternoon/early evening rise on weekdays (post-work, post-school).

Forbidden Fruit has highest trail traffic average on Wednesdays

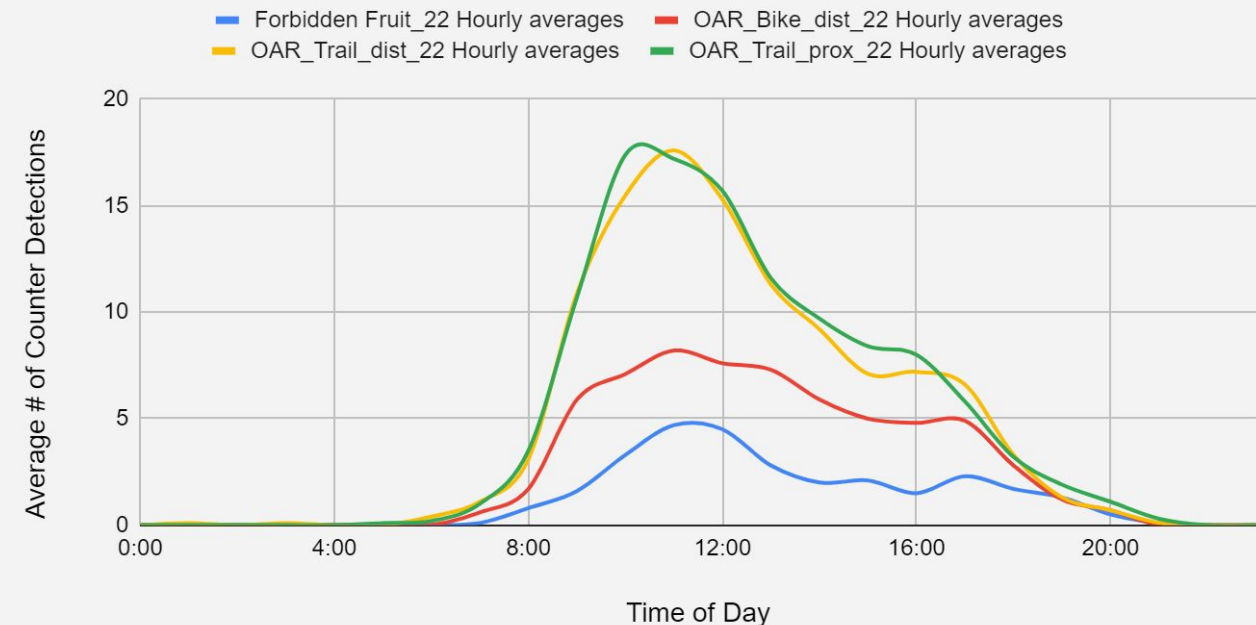


Forbidden Fruit weekday hourly avg. peak occurs at 7PM



Forbidden Fruit use can be heavily attributed to those with quick, convenient access ☐ **WRV locals**

Adams Gulch Weekend Hourly Trail Traffic - Trail Monitoring 2022

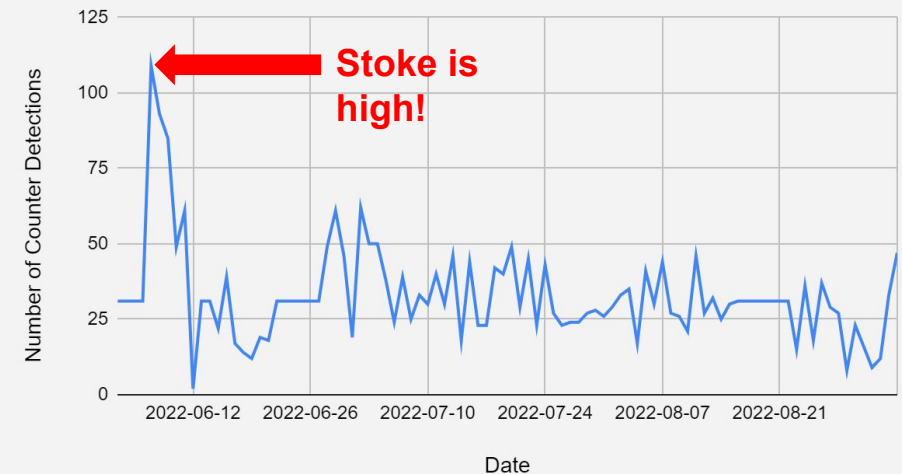


The Lifecycle of a Trail: Trail Monitoring on the new Forbidden Fruit Tr. #159

- Fresh trail □ how are folks engaging?
- Newly constructed trail is ROUGH – a lot of work and attention is needed at the beginning
- Ideal trail conditions take multiple seasons of steady use to be achieved
- Plan: keep monitoring use annually, include counters on upper section, increase volunteer trail work days (and keep riding!!)

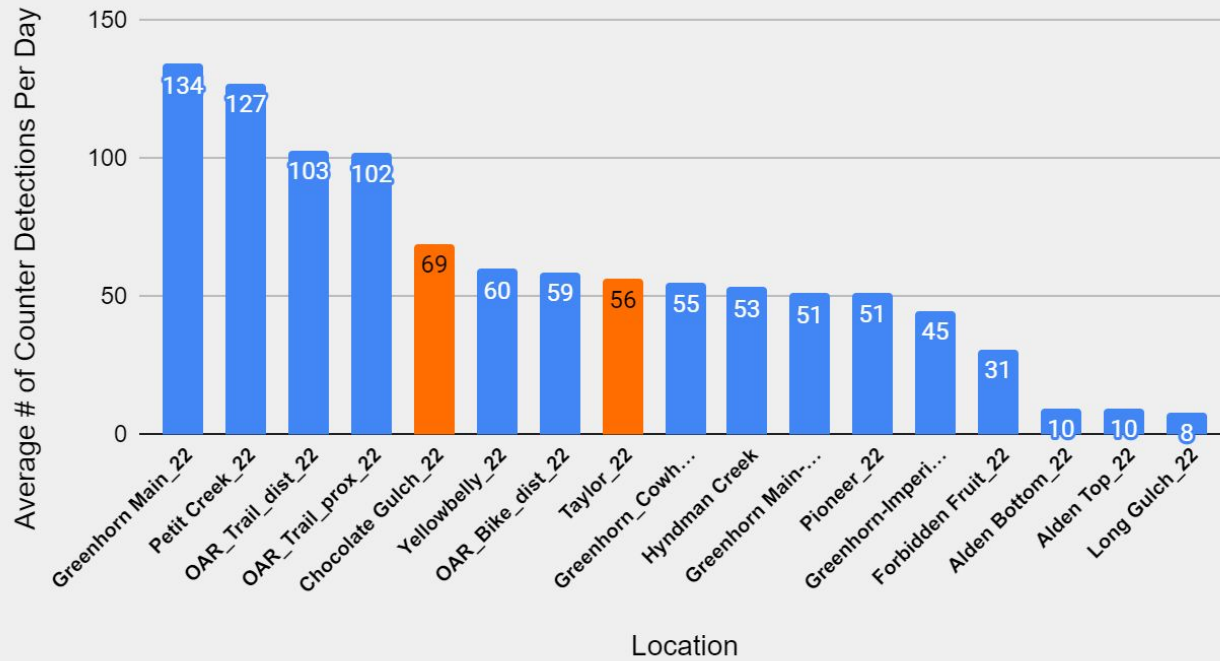


Forbidden Fruit Daily Trail Traffic - Trail Monitoring 2022



TAYLOR CANYON TR. #324; CHOCOLATE GULCH TR. #312

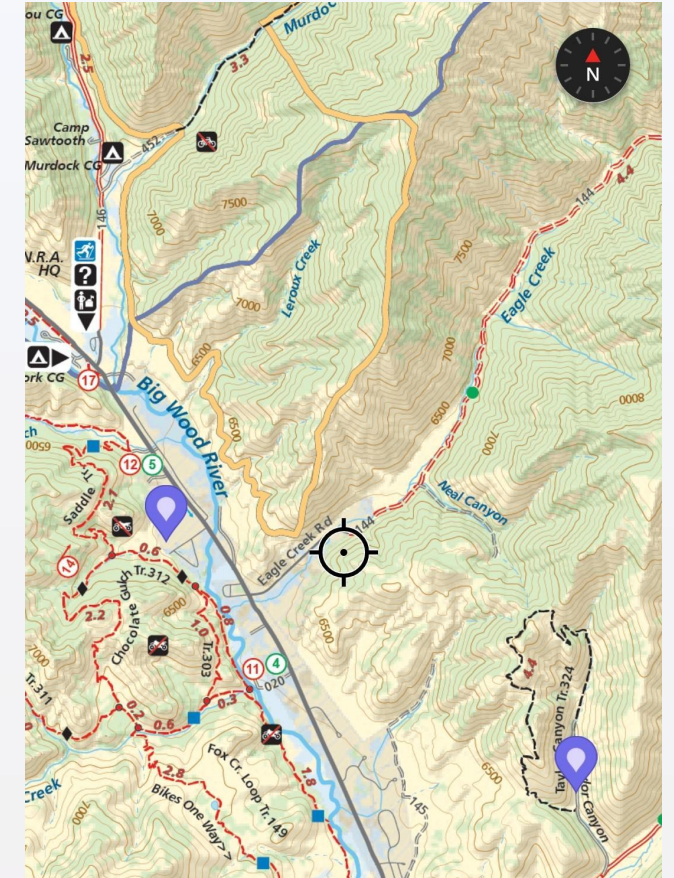
Comparing Average Daily Traffic Values



of Days with Data:

Taylor: 75

Chocolate: 117



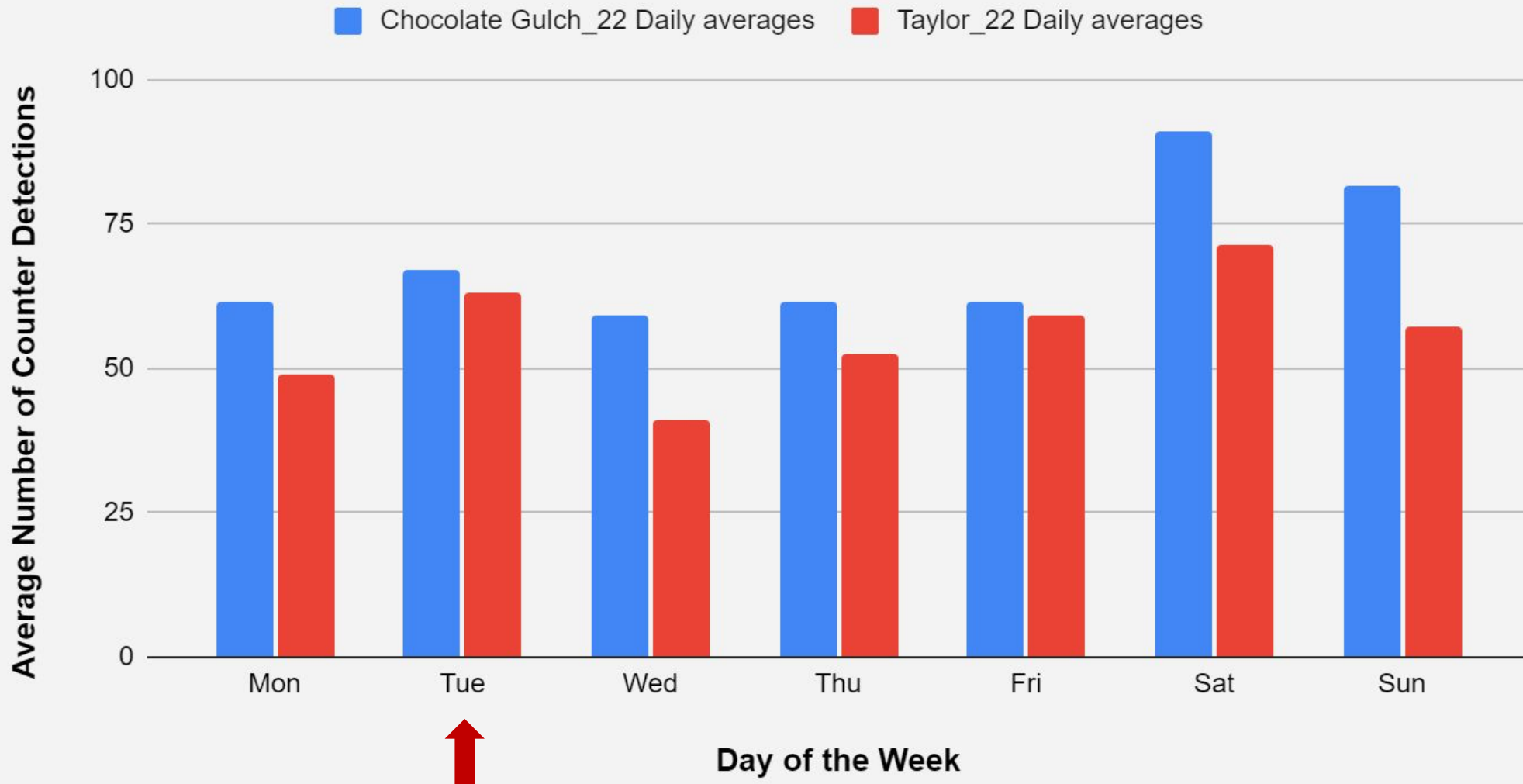
Highest recorded count:

Taylor: **226** (June 17th)

Choco Gulch: **222** (July 4th)



Chocolate Gulch and Taylor Canyon 7-Day Trail Traffic Averages



Notable that the next highest day for average use for Taylor Canyon is a Tuesday/midweek

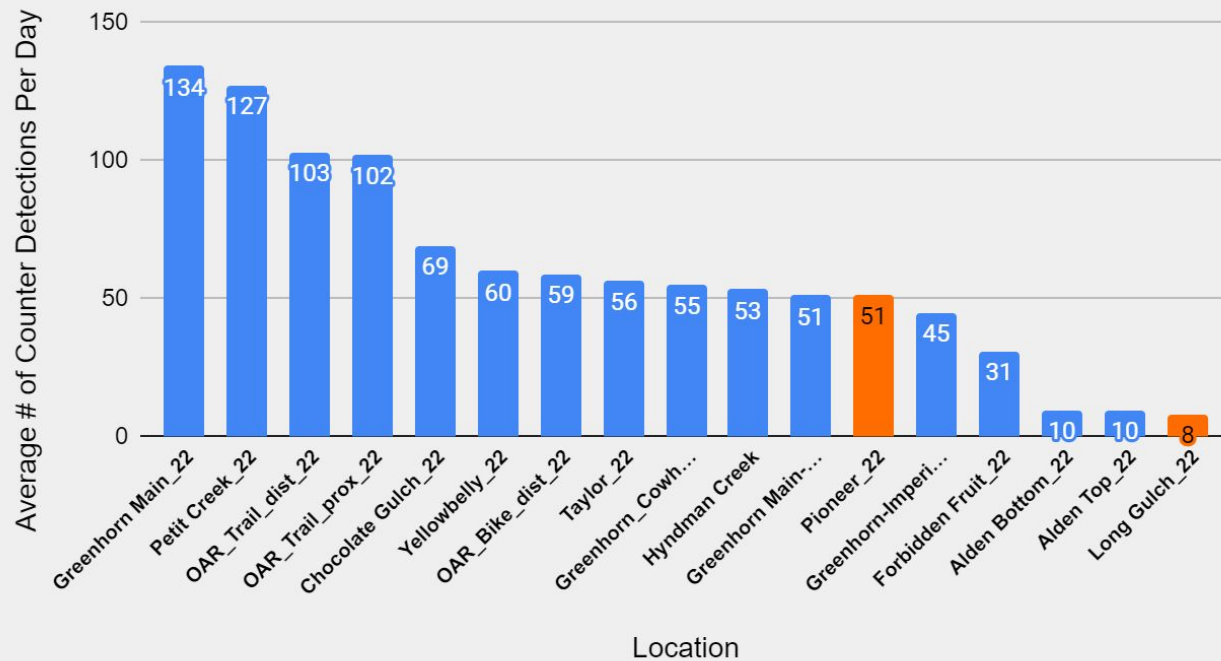


PIONEER CABIN TRAILHEAD:

PIONEER CABIN TR. #122, LONG GULCH TR. #123

of Data Days: **83**

Comparing Average Daily Traffic Values



Highest recorded count:
Pioneer: **147** (June 25th)
Long Gulch: **37** (June 3rd)

2021 Average Daily Traffic for Pioneer: **81**



ALDEN GULCH TR. #144 (2 counters, top and bottom)

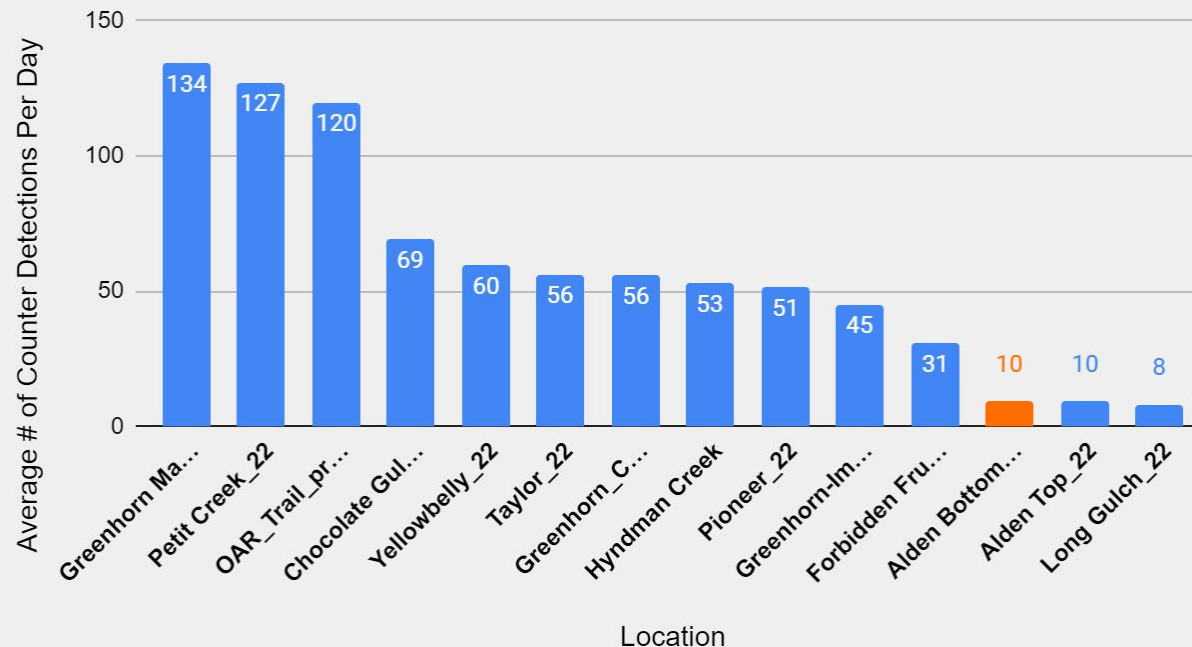
Average Daily Detections:
10*

of Data Days:
99

Alden Counter in 2021:
Average Daily Detections: 172 (!)
Highest recorded count: 297 (!)



Comparing Average Daily Traffic Values

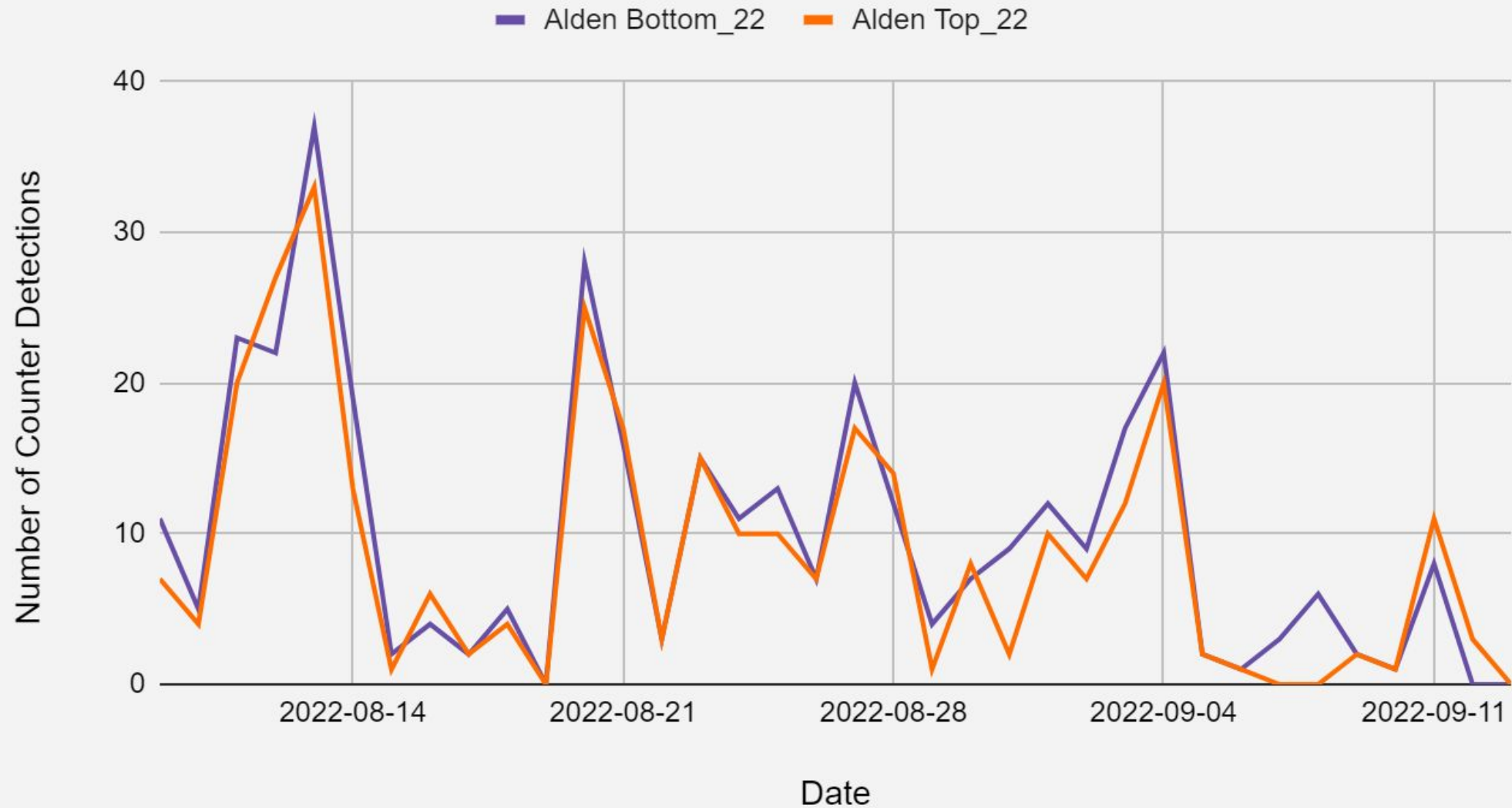


Highest recorded count:
39 (July 30th)
Lowest recorded count:
0 (4+ days in June)

*Results represent only the "Alden Bottom_22" data, unless otherwise specified.

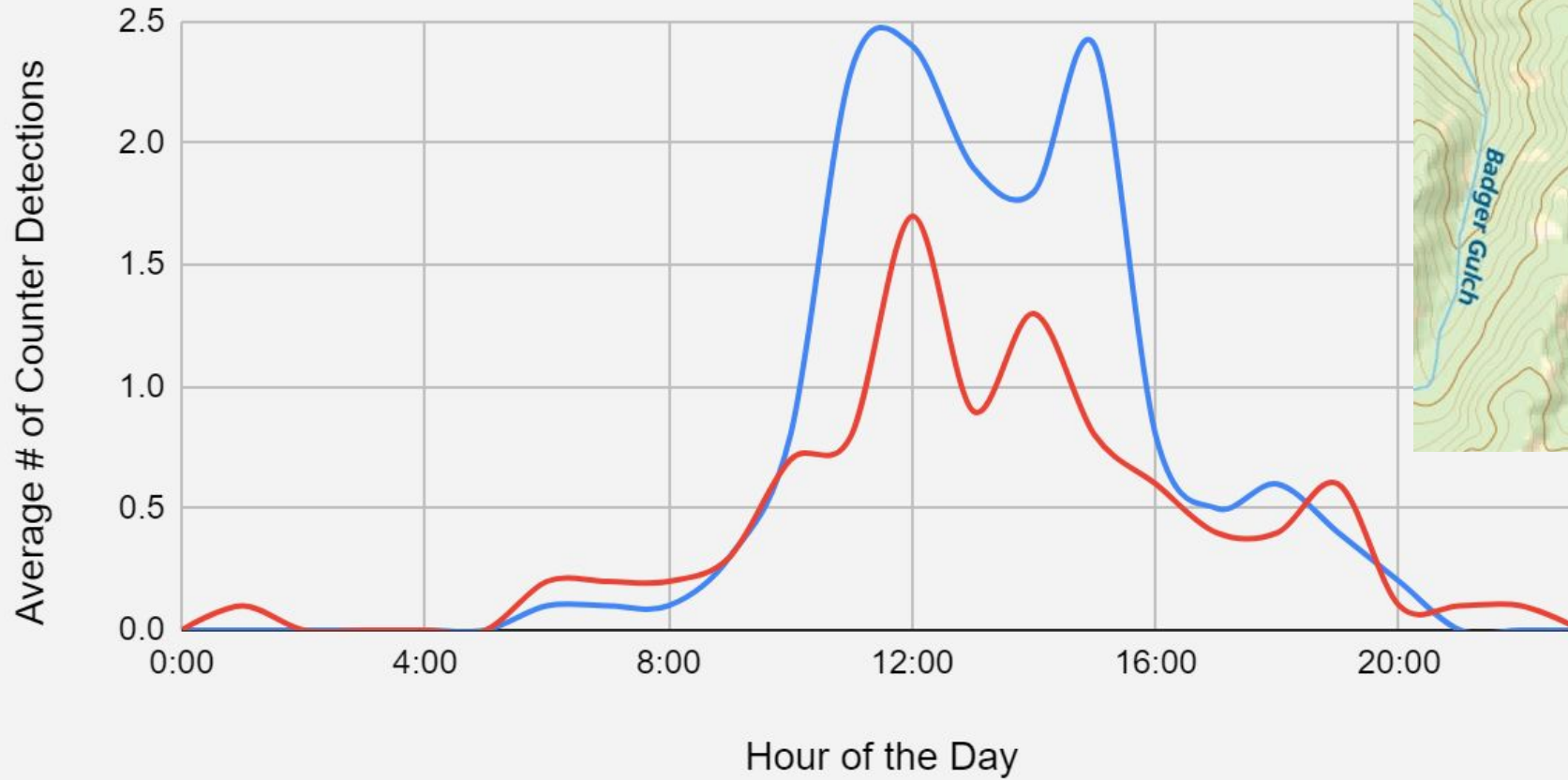


Comparing Trail Traffic at Top and Bottom of Alden Gulch, 2022



Alden Gulch Average Hourly Trail Traffic

— Alden Bottom_22 Hourly averages — Alden Top_22 Hourly averages



ALDEN GULCH TR. #144 (2 counters, top and bottom)

Using “Average Daily Detections” value for days with no data...

Peak Season, Total Approximate Traffic:

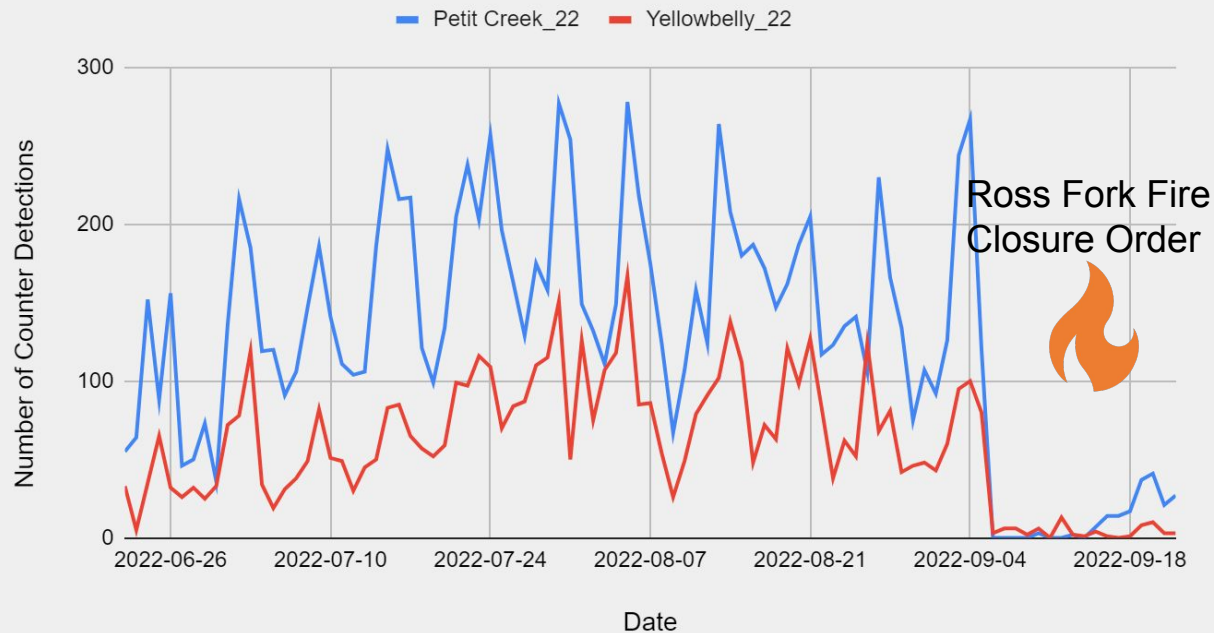
1,063 Detections*



TIN CUP TRAILHEAD: PETIT CREEK TR. #095, YELLOWBELLY TR. #096

of Data Days: **93**

Tin Cup Trailhead - Daily Trail Traffic



Highest recorded count:
Petit: **278** (August 5th)
Yellowbelly: **167** (August 5th)

Average Daily Traffic values, not including any data after September 4th closure order:

Petit: **154**
Yellowbelly: **72**
(slight rise)



Using “Average Daily Detections” value for days with no data...

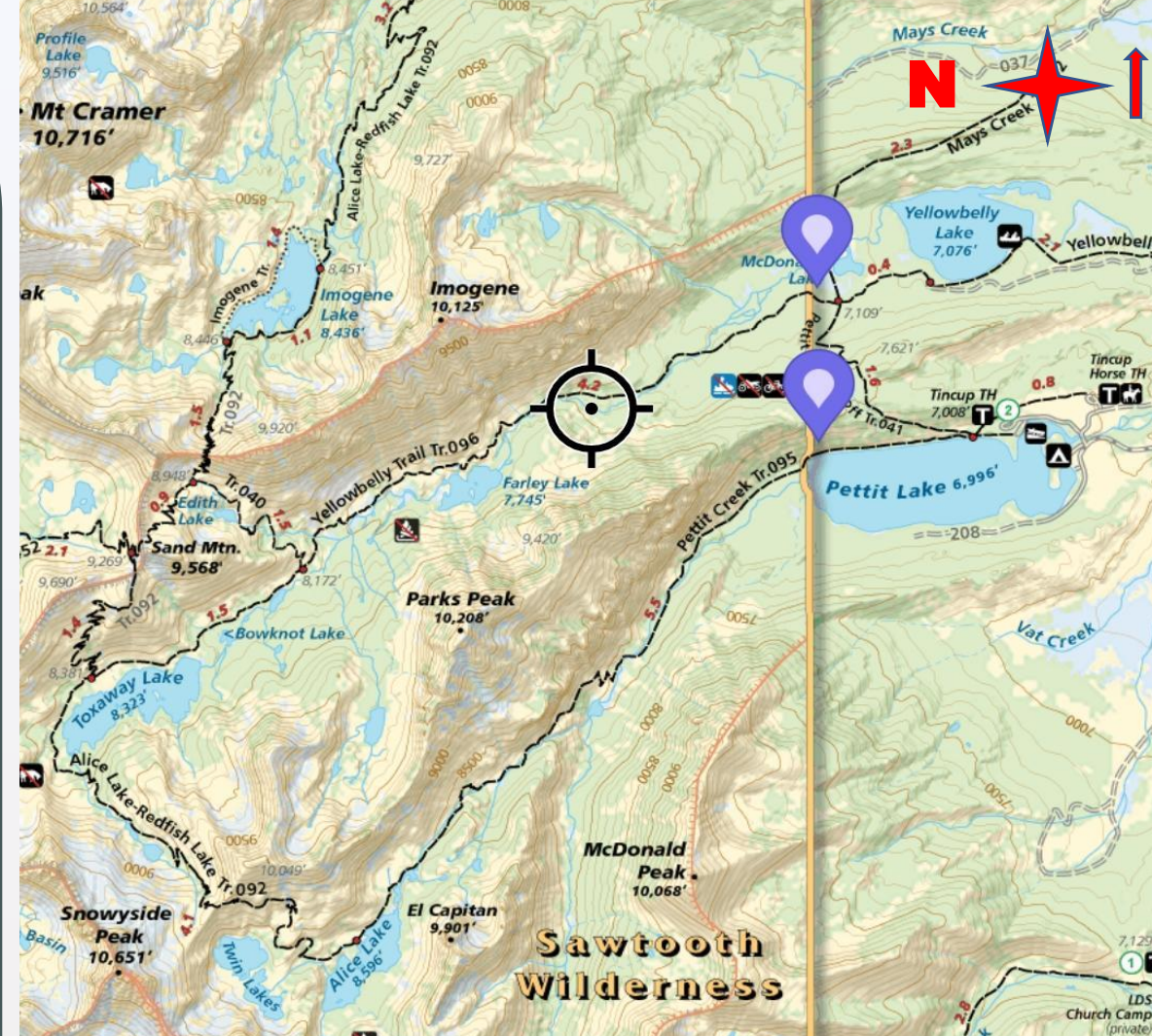
Peak Season, Total Approximate Traffic:

- Petit: **14,572 Detections**
- Yellowbelly: **6,868 Detections**

Assumption: “Most detections at the Yellowbelly counter can be attributed to Alice-Toxaway loop users.”

Conclusion: “Around half of all detections at the Petit Creek trail counter are overnight loop trail users (counted 1x) and half are day users/non-loop users (counted 2x).”

Estimated number of individual user days at Tin Cup Trailhead, Peak Season:
10,720



A person wearing a grey jacket and black pants is walking a light-colored dog on a leash. The dog is facing away from the camera. In the background, a cyclist in a blue shirt and yellow shorts is riding a bicycle on a dirt trail. The scene is set in a grassy field with hills in the distance under a blue sky with some clouds.

New Equipment and New Understandings

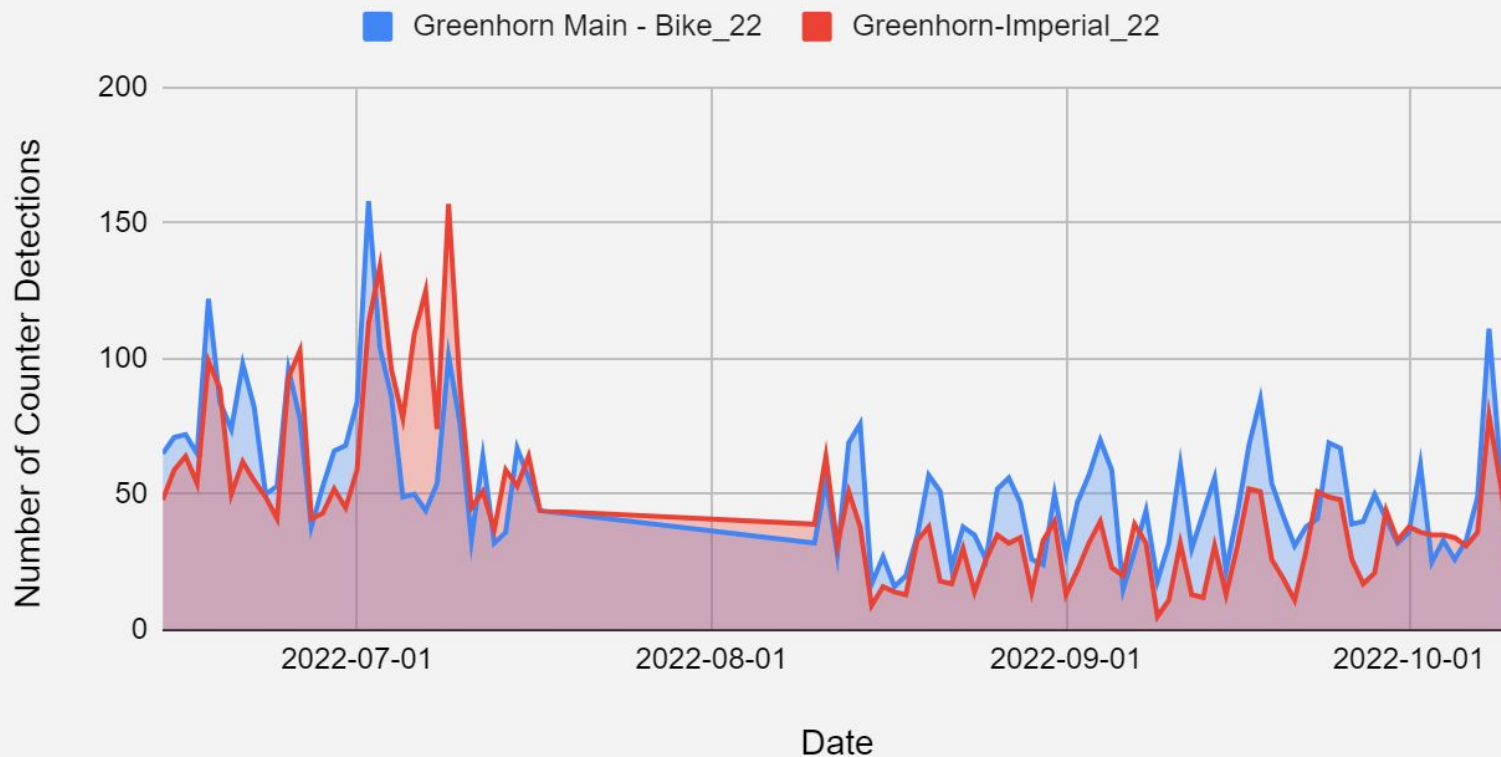
User Group Breakdowns, Unlocked by TRAFx



Bikes=37% of GH trail traffic, on avg.

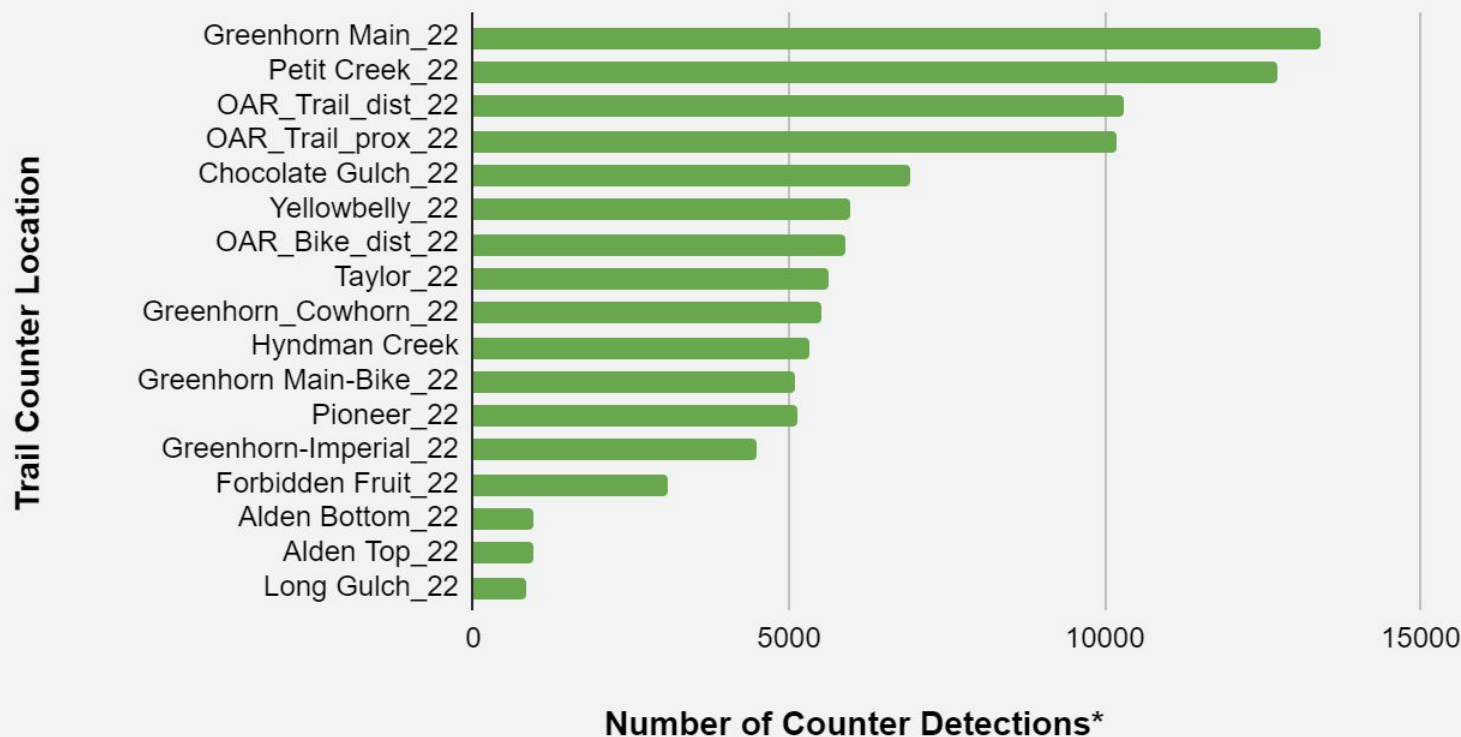
Bikes = 54% of Old Adams Rd. trail traffic, on avg.

Proportion of Bike Traffic vs. All Traffic - Imperial Gulch 2022



2022 Peak Season Totals and Year-to-Year Comparisons

2022 Peak Season Trail Traffic Totals



*Average Daily Total
X
100 Days in Peak Season

**=102,426
Detections**
(Across all sites)

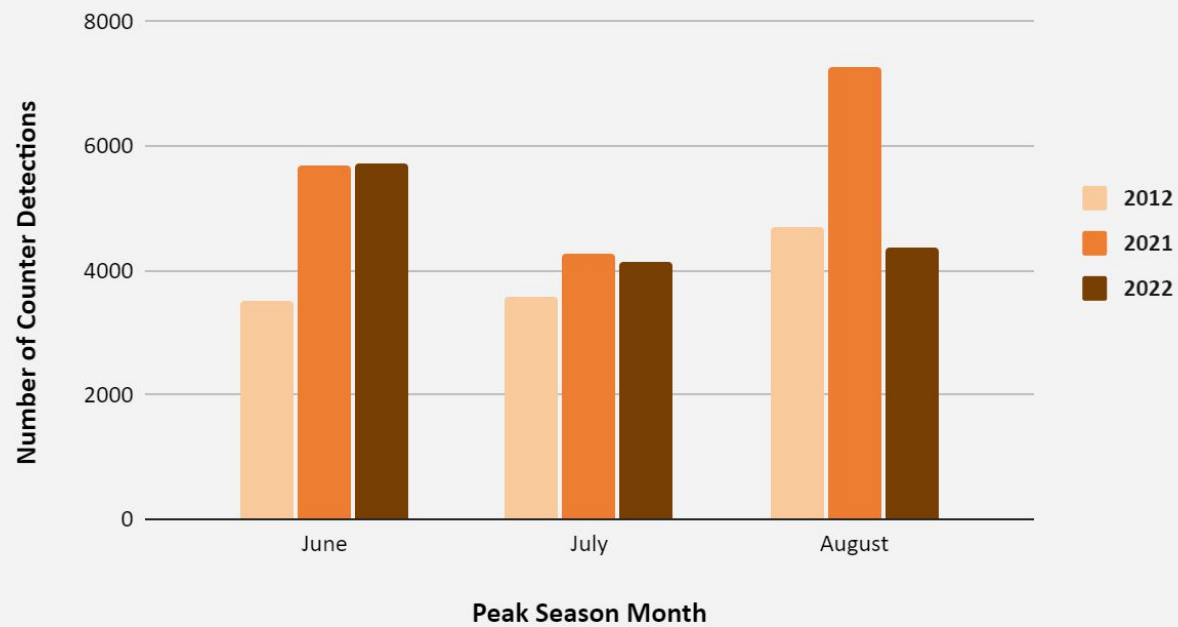
80% "Out and Back" rate:
61,455 user days

50% "Out and Back" rate:
76,819 user days

20% "Out and Back" rate:
92,183 user days

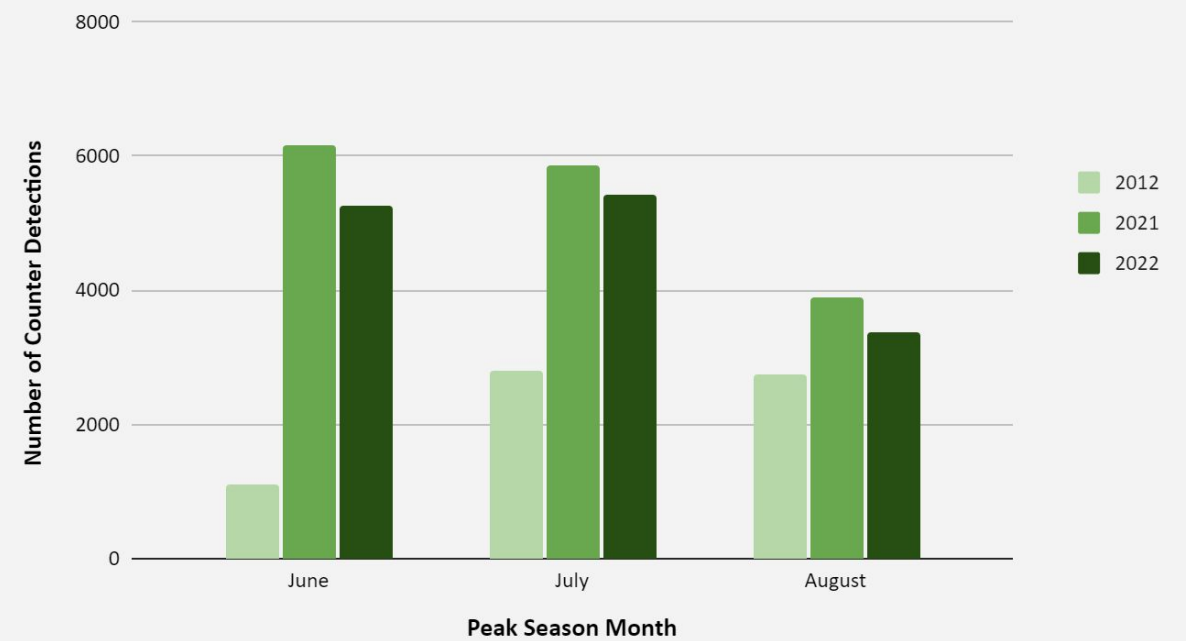


Adams Gulch* Year-to-Year Trail Traffic Comparisons



*Comparing "OAR" site data ONLY

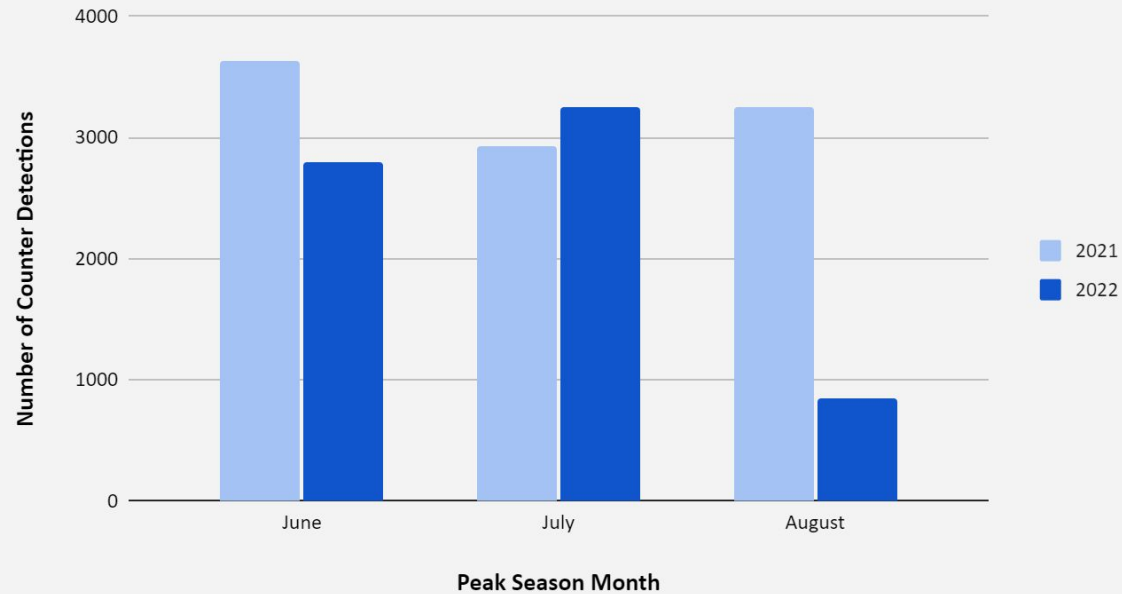
Greenhorn* Year-to-Year Trail Traffic Comparisons



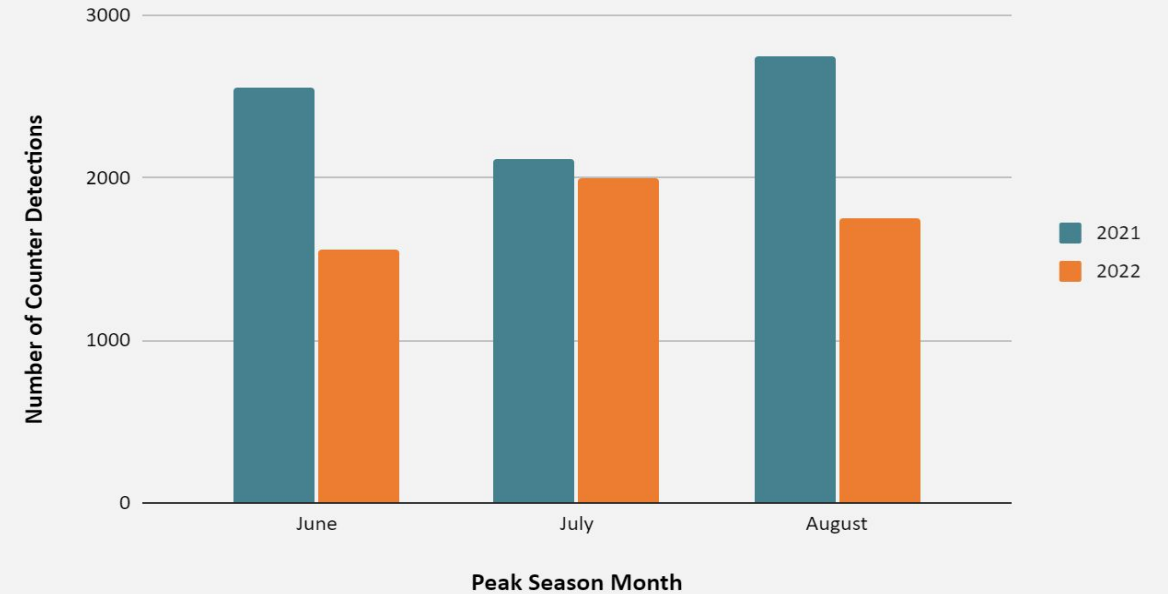
*Comparing "Greenhorn-Main" site data ONLY



Taylor Canyon Year-to-Year Comparisons



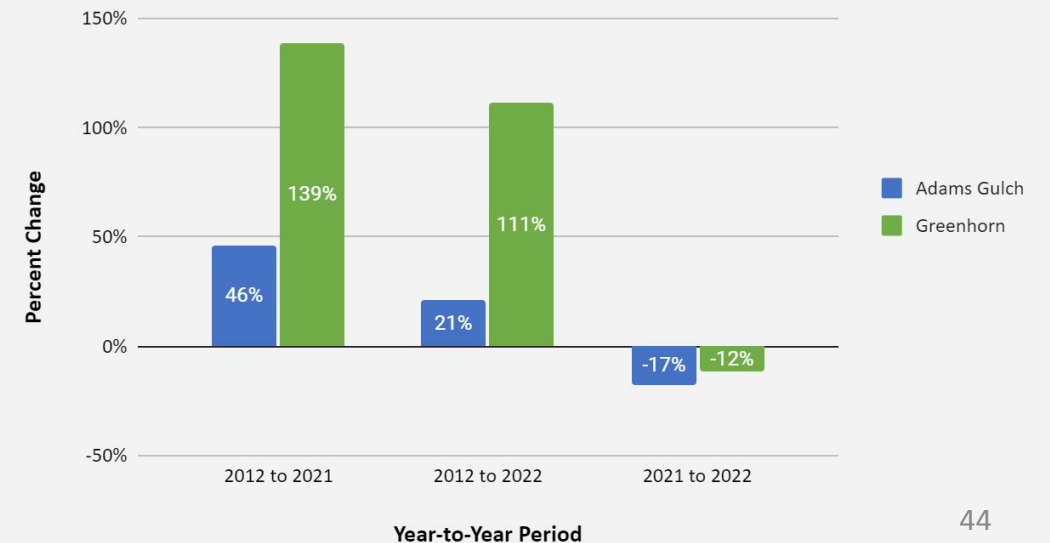
Pioneer Cabin Year-to-Year Comparisons



Taylor Canyon, 2021-2022 % Change in Total Peak Season Detections: -30%

Pioneer Cabin, 2021-2022 % Change in Total Peak Season Detections: -28%

% Change in Total Peak Season Detections



Impacts of Trail Monitoring Data

2021



Partnership established



Data collected and shared



New dog waste bin added

Ongoing partnership, collaboration, communication

Norton Creek TH

Taylor Canyon TH



Alden Gulch TH

Pioneer Cabin TH

Greenhorn TH



Popular trails could see upgrades, added capacity

Forest Service seeking comments on trails expansion and new trailhead parking by Oct. 21

By TONY TEKARONIAKE EVANS Express Staff Writer Sep 21, 2022 1



Thank You for Joining Us!

Questions? Send a message to
erodrigue@woodrivertrailscoalition.org

Check Out woodrivertrailscoalition.org

And THANK YOU Ketchum
Community Library for
hosting!

